

Nur für Forschungszwecke

# Cytokeratin 15 Monoklonaler Antikörper



Katalog-Nr.:60247-1-Ig **1 Publikationen**

## Allgemeine Informationen

<b>Katalog-Nr.:</b> 60247-1-Ig	<b>GenBank-Zugangsnummer:</b> BC002641	<b>Reinigungsmethode:</b> Protein-A-Reinigung
<b>Größe:</b> 150ul , Konzentration: 1629 µg/ml von3866 Nanodrop und 1000 µg/ml durch die Bradford-Methode mit BSA als Standard;	<b>GeneID (NCBI):</b> keratin 15	<b>CloneNo.:</b> 6B4F8
<b>Wirt:</b> Maus	<b>Vollständiger Name:</b> keratin 15	<b>Empfohlene Verdünnungen:</b> WB 1:500-1:2000 IHC 1:100-1:1000 IF 1:10-1:100
<b>Isotyp:</b> IgG1	<b>Berechnete Masse:</b> 49 kDa	
<b>Immunogen Katalognummer:</b> AG0185	<b>Beobachtete Masse:</b> 49 kDa	

## Anwendungen

<b>Geprüfte Anwendungen:</b> FC, IF, IHC, WB, ELISA	<b>Positivkontrollen:</b> WB : A431-Zellen, IHC : humanes Ösophaguskarzinomgewebe, humanes Hautkrebsgewebe IF : HeLa-Zellen,
<b>In Publikationen genannte Anwendungen:</b> IF	
<b>Getestete Reaktivität:</b> Human, Maus	
<b>Hinweis-IHC: Antigendmaskierung mit TE-Puffer pH 9,0 empfohlen. (*) Wahlweise kann die Antigendmaskierung auch mit Citratpuffer pH 6,0 erfolgen.</b>	

## Hintergrundinformationen

Keratins are a large family of proteins that form the intermediate filament cytoskeleton of epithelial cells. Keratin expression is highly regulated, tissue specific, and varies according to cell-state. Type I keratins consist of acidic, low molecular weight proteins with MW ranging from 40 kDa (KRT19) to 64 kDa (KRT9). Type 2 keratins consist of basic or neutral, high molecular weight proteins with MW from 52 kDa (KRT8) to 67 kDa (KRT18). Keratin 15 is a type I cytokeratin. It is found in some progenitor basal cells within complex epithelia.

## Bemerkenswerte Veröffentlichungen

Verfasser	Pubmed ID	Journal	Anwendung
Jiali Li	36388171	Oxid Med Cell Longev	IF

## Lagerung

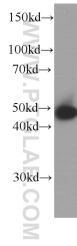
**Lagerungsbedingungen:**  
Bei -20°C lagern. Nach dem Versand ein Jahr lang stabil  
**Lagerungspuffer:**  
PBS mit 0.02% Natriumazid und 50% Glycerin pH 7.3.  
Aliquotieren ist nicht notwendig bei -20°C Lagerung

\*\*\* 20ul-Größen enthalten 0.1% BSA

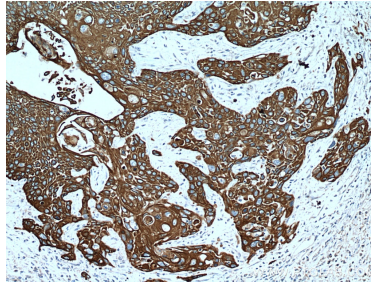
For technical support and original validation data for this product please contact:  
T: 1 (888) 4PTGLAB (1-888-478-4522) (toll free in USA), or 1(312) 455-8498 (outside USA)  
E: proteintech@ptglab.com  
W: ptglab.com

This product is exclusively available under Proteintech Group brand and is not available to purchase from any other manufacturer.

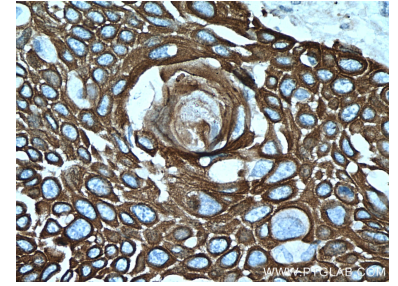
## Ausgewählte Validierungsdaten



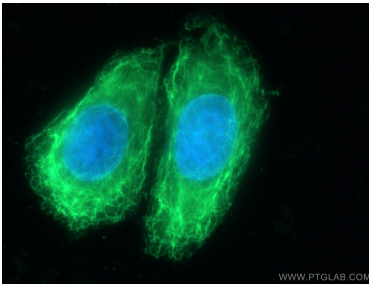
A431 cells were subjected to SDS PAGE followed by western blot with 60247-1-Ig (Cytokeratin 15 antibody) at dilution of 1:1000 incubated at room temperature for 1.5 hours.



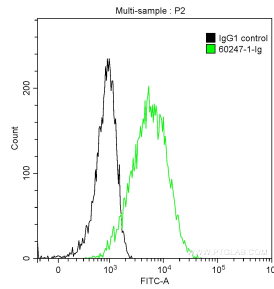
Immunohistochemical analysis of paraffin-embedded human oesophagus cancer tissue slide using 60247-1-Ig (Cytokeratin 15 antibody) at dilution of 1:500 (under 10x lens).



Immunohistochemical analysis of paraffin-embedded human oesophagus cancer tissue slide using 60247-1-Ig (Cytokeratin 15 antibody) at dilution of 1:500 (under 40x lens).



Immunofluorescent analysis of (-20°C Ethanol) fixed HeLa cells using Cytokeratin 15 antibody (60247-1-Ig, Clone: 6B4F8) at dilution of 1:25 and CoraLite488-Conjugated AffiniPure Goat Anti-Mouse IgG(H+L).



$1 \times 10^6$  A431 cells were intracellularly stained with 0.2 ug Anti-Human Cytokeratin 15 (60247-1-Ig, Clone:6B4F8) and CoraLite@488-Conjugated AffiniPure Goat Anti-Mouse IgG(H+L) at dilution 1:1000 (green), and 0.2 ug Control Antibody. Cells were fixed with 90% MeOH.