

Allgemeine Informationen

Katalog-Nr.: 60263-1-Ig	GenBank-Zugangsnummer: BC011908	Reinigungsmethode: Protein-A-Reinigung
Größe: 150ul , Konzentration: 3000 µg/ml von4232 Nanodrop und 2000 µg/ml durch die Bradford-Methode mit BSA als Standard;	GeneID (NCBI): mesoderm specific transcript homolog (mouse)	CloneNo.: 1A4A1
Wirt: Maus	Berechnete Masse: 38 kDa	Empfohlene Verdünnungen: WB 1:500-1:2000 IHC 1:50-1:500 IF 1:50-1:500
Isotyp: IgG2a	Beobachtete Masse: 34 kDa	
Immunogen Katalognummer: AG11929		

Anwendungen

Geprüfte Anwendungen: IF, IHC, WB,ELISA	Positivkontrollen:
Getestete Reaktivität: Human, Maus	WB : PC-3-Zellen, IHC : humanes Prostatakarzinomgewebe, IF : BxPC-3-Zellen,
Hinweis-IHC: Antigenmaskierung mit TE-Puffer pH 9,0 empfohlen. (*) Wahlweise kann die Antigenmaskierung auch mit Citratpuffer pH 6,0 erfolgen.	

Hintergrundinformationen

MEST(Mesoderm-specific transcript homolog protein) is also named as PEG1 and belongs to the AB hydrolase superfamily. The gene is a imprinting gene, which is associated with growth of mesodermal origin cells(PMID:20339302) and plays important roles in embryo development(PMID:21375506). It is also a novel regulator of Wnt/CTNNB signalling during adipogenic differentiation(PMID:21375506). It has 3 isoforms produced by alternative splicing and the full length protein has a glycosylation site.

Lagerung

Lagerungsbedingungen:
Bei -20°C lagern. Nach dem Versand ein Jahr lang stabil
Lagerungspuffer:
PBS mit 0.02% Natriumazid und 50% Glycerin pH 7.3.
Aliquotieren ist nicht notwendig bei -20°C Lagerung

***** 20ul-Größen enthalten 0.1% BSA**

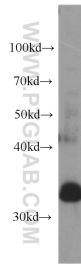
For technical support and original validation data for this product please contact:

T: 1 (888) 4PTGLAB (1-888-478-4522) (toll free
in USA), or 1(312) 455-8498 (outside USA)

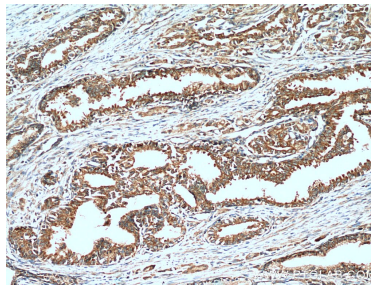
E: proteintech@ptglab.com
W: ptglab.com

This product is exclusively available under Proteintech Group brand and is not available to purchase from any other manufacturer.

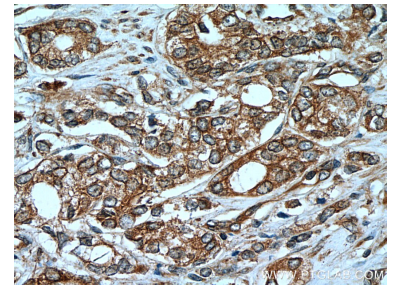
Ausgewählte Validierungsdaten



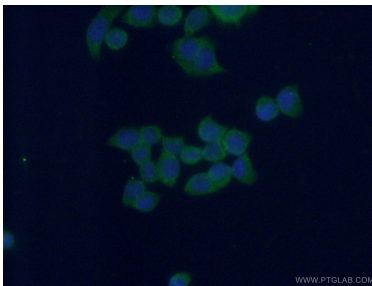
PC-3 cells were subjected to SDS PAGE followed by western blot with 60263-1-Ig (MEST antibody) at dilution of 1:1000 incubated at room temperature for 1.5 hours.



Immunohistochemical analysis of paraffin-embedded human prostate cancer tissue slide using 60263-1-Ig (MEST Antibody) at dilution of 1:400 (under 10x lens).



Immunohistochemical analysis of paraffin-embedded human prostate cancer tissue slide using 60263-1-Ig (MEST Antibody) at dilution of 1:400 (under 40x lens).



Immunofluorescent analysis of (-20°C Ethanol) fixed BxPC-3 cells using 60263-1-Ig (MEST antibody) at dilution of 1:100 and Alexa Fluor 488-conjugated AffiniPure Goat Anti-Mouse IgG(H+L).