

Nur für Forschungszwecke

CCT3 Monoklonaler Antikörper

Katalog-Nr.:60264-1-Ig



Allgemeine Informationen

Katalog-Nr.: 60264-1-Ig	GenBank-Zugangsnummer: BC006501	Reinigungsmethode: Protein-A-Reinigung
Größe: 150ul , Konzentration: 1800 µg/ml von7203 Nanodrop und 847 µg/ml durch die Bradford-Methode mit BSA als Standard;	GeneID (NCBI): 5	CloneNo.: 5F5A6
Wirt: Maus	Vollständiger Name: chaperonin containing TCP1, subunit 3 (gamma)	Empfohlene Verdünnungen: WB 1:500-1:2000 IF 1:20-1:200
Isotyp: IgG2b	Berechnete Masse: 60 kDa	
Immunogen Katalognummer: AG0843	Beobachtete Masse: 56-60 kDa	

Anwendungen

Geprüfte Anwendungen: FC, IF, WB, ELISA	Positivkontrollen: WB : COLO 320-Zellen, IF : HepG2-Zellen,
Getestete Reaktivität: Human, Maus	

Hintergrundinformationen

Lagerung

Lagerungsbedingungen:
Bei -20°C lagern. Nach dem Versand ein Jahr lang stabil
Lagerungspuffer:
PBS mit 0.02% Natriumazid und 50% Glycerin pH 7.3.
Aliquotieren ist nicht notwendig bei -20°C Lagerung

*** 20ul-Größen enthalten 0.1% BSA

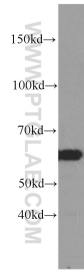
For technical support and original validation data for this product please contact:

T: 1 (888) 4PTGLAB (1-888-478-4522) (toll free
in USA), or 1(312) 455-8498 (outside USA)

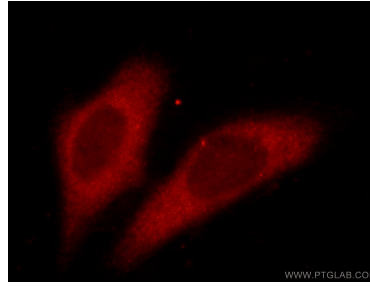
E: proteintech@ptglab.com
W: ptglab.com

This product is exclusively available under Proteintech Group brand and is not available to purchase from any other manufacturer.

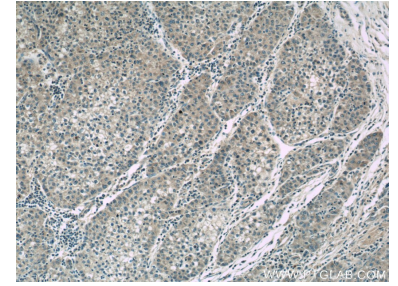
Ausgewählte Validierungsdaten



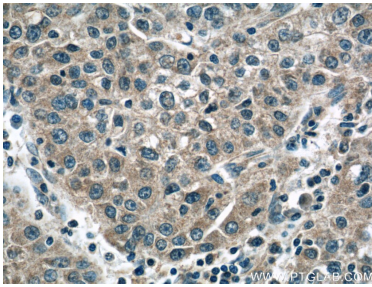
COLO 320 cells were subjected to SDS PAGE followed by western blot with 60264-1-Ig (CCT3 antibody) at dilution of 1:1000 incubated at room temperature for 1.5 hours.



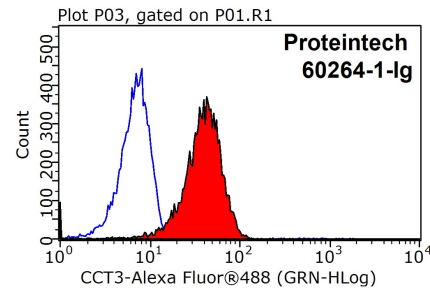
Immunofluorescent analysis of HepG2 cells using 60264-1-Ig (CCT3 Antibody) at dilution of 1:50 and Rhodamine-labeled goat anti-mouse IgG (red).



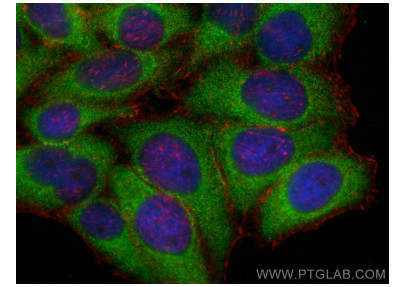
Immunohistochemical analysis of paraffin-embedded human liver cancer tissue slide using 60264-1-Ig (CCT3 Antibody) at dilution of 1:50.



Immunohistochemical analysis of paraffin-embedded human liver cancer tissue slide using 60264-1-Ig (CCT3 Antibody) at dilution of 1:50.



1x10⁶ HepG2 cells were stained with 0.2ug CCT3 antibody (60264-1-Ig, red) and control antibody (blue). Fixed with 90% MeOH blocked with 3% BSA (30 min). Alexa Fluor 488-conjugated AffiniPure Goat Anti-Mouse IgG(H+L) with dilution 1:1000.



Immunofluorescent analysis of (-20°C Ethanol) fixed HepG2 cells using CCT3 antibody (60264-1-Ig, Clone: 5F5A6) at dilution of 1:800 and CoraLite@488-Conjugated AffiniPure Goat Anti-Mouse IgG(H+L), CL594-Phalloidin (red).