

## Allgemeine Informationen

<b>Katalog-Nr.:</b> 60267-1-Ig	<b>GenBank-Zugangsnummer:</b> BC014175	<b>Reinigungsmethode:</b> Protein-A-Reinigung
<b>Größe:</b> 150ul , Konzentration: 2831 µg/ml von581 Nanodrop und 1600 µg/ml durch die Bradford-Methode mit BSA als Standard;	<b>GeneID (NCBI):</b> Vollständiger Name: BCL2-associated X protein	<b>CloneNo.:</b> 4G5E8
<b>Wirt:</b> Maus	<b>Berechnete Masse:</b> 21 kDa	<b>Empfohlene Verdünnungen:</b> WB 1:5000-1:20000 IHC 1:500-1:2000
<b>Isotyp:</b> IgG2b	<b>Beobachtete Masse:</b> 21 kDa	
<b>Immunogen Katalognummer:</b> AG21068		

## Anwendungen

### Geprüfte Anwendungen:

FC, IHC, WB, ELISA

### In Publikationen genannte Anwendungen:

CoIP, ICC, IF, IHC, WB

### Getestete Reaktivität:

Human, Maus, Ratte

### Zitierte Arten:

Hausschwein, Human, Hund, Maus, Ratte

**Hinweis-IHC: Antigendemaskierung mit TE-Puffer pH 9,0 empfohlen. (\*) Wahlweise kann die Antigendemaskierung auch mit Citratpuffer pH 6,0 erfolgen.**

### Positivkontrollen:

**WB** : HeLa-Zellen, COLO 320-Zellen, HEK-293-Zellen, HepG2-Zellen, humanes Hodengewebe, Neuro-2a-Zellen, PC-12-Zellen, ROS1728-Zellen

**IHC** : humanes Leberkarzinomgewebe,

## Hintergrundinformationen

BAX, also named as BCL2L4, is a pro-apoptotic member of the Bcl-2 protein family, which plays a pivotal role in controlling cell life and death. Bax largely localizes to the cytoplasm of healthy cells, but accumulates on the outer mitochondrial membrane upon apoptosis induction (PMID: 9108035). BAX can commit a cell to apoptosis by translocation from the cytosol to the mitochondria and permeabilization of the outer mitochondrial membrane, which leads to the release of cytochrome c from mitochondria (PMID: 21763611). The expression of BAX is upregulated by the tumor suppressor protein p53, and BAX has been shown to be involved in p53-mediated apoptosis (PMID: 8183579).

## Bemerkenswerte Veröffentlichungen

Verfasser	Pubmed ID	Journal	Anwendung
Ji Xing	36230734	Cancers (Basel)	WB
Qiu-Lin Yan	36209565	Bioorg Chem	WB
Fei Yu	36175965	Chin Med	WB

## Lagerung

### Lagerungsbedingungen:

Bei -20°C lagern. Nach dem Versand ein Jahr lang stabil

### Lagerungspuffer:

PBS mit 0.02% Natriumazid und 50% Glycerin pH 7.3.

Aliquotieren ist nicht notwendig bei -20°C Lagerung

\*\*\* 20ul-Größen enthalten 0.1% BSA

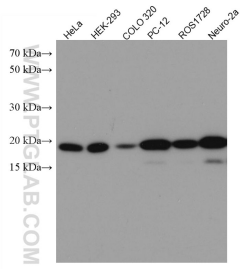
For technical support and original validation data for this product please contact:

T: 1 (888) 4PTGLAB (1-888-478-4522) (toll free in USA), or 1(312) 455-8498 (outside USA)

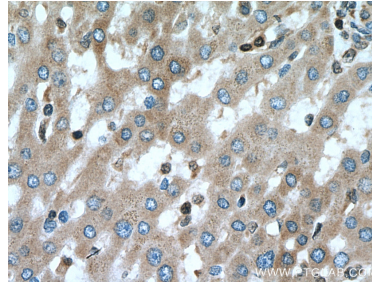
E: [proteintech@ptglab.com](mailto:proteintech@ptglab.com)  
W: [ptglab.com](http://ptglab.com)

This product is exclusively available under Proteintech Group brand and is not available to purchase from any other manufacturer.

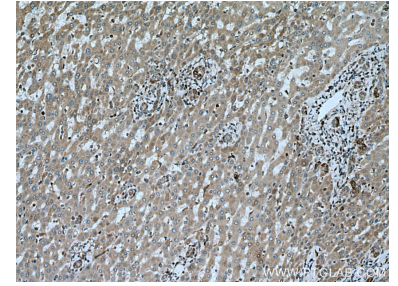
## Ausgewählte Validierungsdaten



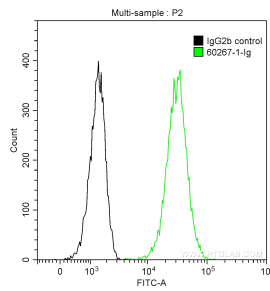
Various lysates were subjected to SDS PAGE followed by western blot with 60267-1-Ig (BAX antibody) at dilution of 1:20000 incubated at room temperature for 1.5 hours.



Immunohistochemical analysis of paraffin-embedded human liver cancer tissue slide using 60267-1-Ig (BAX antibody) at dilution of 1:1000 (under 40x lens). Heat mediated antigen retrieval with Tris-EDTA buffer (pH 9.0).



Immunohistochemical analysis of paraffin-embedded human liver cancer tissue slide using 60267-1-Ig (BAX antibody) at dilution of 1:1000 (under 10x lens). Heat mediated antigen retrieval with Tris-EDTA buffer (pH 9.0).



1X10<sup>6</sup> MCF-7 cells were stained with 0.2 ug Anti-Human BAX (60267-1-Ig, Clone:4G5E8) and CoraLite@488-Conjugated AffiniPure Goat Anti-Mouse IgG(H+L) at dilution 1:1000 (green), and 0.2 ug Control Antibody. Cells were fixed with 90% MeOH.