

Nur für Forschungszwecke

# PKM2-specific Monoklonaler Antikörper



Katalog-Nr.: 60268-1-Ig

Vorgestelltes Produkt

30 Publikationen

## Allgemeine Informationen

Katalog-Nr.:  
60268-1-Ig

Größe:  
150ul, Konzentration: 1000 µg/ml von 5315  
Nanodrop und 585 µg/ml durch die  
Bradford-Methode mit BSA als  
Standard;

Wirt:  
Maus

Isotyp:  
IgG1

GenBank-Zugangsnummer:  
NM\_002654

GeneID (NCBI):

Vollständiger Name:  
PKM pyruvate kinase, muscle

Berechnete Masse:  
58 kDa

Beobachtete Masse:  
58 kDa

Reinigungsmethode:  
Protein-A-Reinigung

CloneNo.:  
1C11C7

Empfohlene Verdünnungen:  
WB 1:5000-1:30000  
IP 0.5-4.0 µg für IP und 1:200-1:1000  
für WB  
IHC 1:100-1:1000  
IF 1:200-1:800

## Anwendungen

Geprüfte Anwendungen:  
FC, IF, IHC, IP, WB, ELISA

In Publikationen genannte Anwendungen:  
CoIP, ICC, IF, IHC, IP, WB

Getestete Reaktivität:  
Human, Maus, Ratte

Zitierte Arten:  
Human, Maus, Ratte

**Hinweis-IHC: Antigendemaskierung mit TE-Puffer pH 9,0 empfohlen. (\*) Wahlweise kann die Antigendemaskierung auch mit Citratpuffer pH 6,0 erfolgen.**

Positivkontrollen:

WB : HEK-293-Zellen, 4T1-Zellen, C6-Zellen, HepG2-Zellen, humanes Hirngewebe, K-562-Zellen, MCF-7-Zellen, NIH/3T3-Zellen, Rattenhirngewebe, ROS1728-Zellen

IP : HeLa-Zellen,

IHC : humanes Kolonkarzinomgewebe,

IF : HeLa-Zellen, HepG2-Zellen

## Hintergrundinformationen

PKM, also named as OIP3, PK2, PK3, PKM, p58, THBP1, CTHBP and Tumor M2-PK, belongs to the pyruvate kinase family. It is glycolytic enzyme that catalyzes the transfer of a phosphoryl group from phosphoenolpyruvate (PEP) to ADP, generating ATP. It stimulates POU5F1-mediated transcriptional activation. PKM plays a general role in caspase independent cell death of tumor cells. PKM has 2 isoforms, the activity of the M2 isoform can be inhibited by tyrosine kinase signalling in tumour cells. The immunogen of this antibody is M2 isoform and this antibody is specific to PKM2 isoform.

## Bemerkenswerte Veröffentlichungen

Verfasser	Pubmed ID	Journal	Anwendung
Teresa W-M Fan	36150727	J Immunol	
Bin Zhang	31500508	Autophagy	WB
Yubo Zhao	36064939	Cell Death Dis	WB

## Lagerung

Lagerungsbedingungen:

Bei -20°C lagern. Nach dem Versand ein Jahr lang stabil

Lagerungspuffer:

PBS mit 0.02% Natriumazid und 50% Glycerin pH 7.3.

Aliquotieren ist nicht notwendig bei -20°C Lagerung

\*\*\* 20ul-Größen enthalten 0.1% BSA

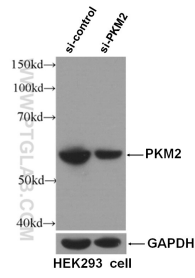
For technical support and original validation data for this product please contact:

T: 1 (888) 4PTGLAB (1-888-478-4522) (toll free in USA), or 1(312) 455-8498 (outside USA)

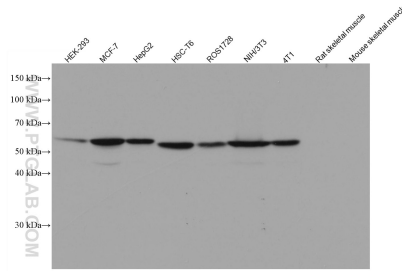
E: proteintech@ptglab.com  
W: ptglab.com

This product is exclusively available under Proteintech Group brand and is not available to purchase from any other manufacturer.

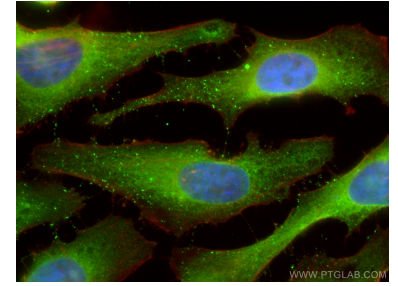
## Ausgewählte Validierungsdaten



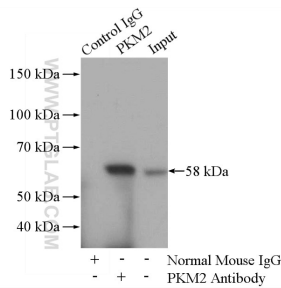
WB result of PKM2 antibody (60268-1-Ig, 1:3000) with si-Control and si-PKM2 transfected HEK293 cells.



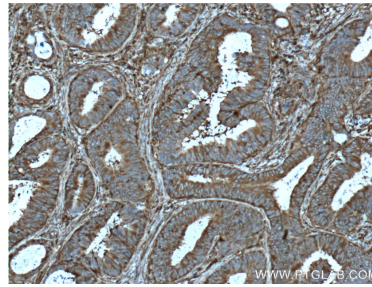
Various lysates were subjected to SDS PAGE followed by western blot with 60268-1-Ig (PKM2-specific antibody) at dilution of 1:20000 incubated at room temperature for 1.5 hours.



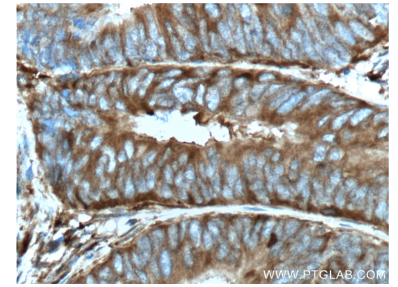
Immunofluorescent analysis of (4% PFA) fixed HeLa cells using PKM2-specific antibody (60268-1-Ig, Clone: 1C11C7) at dilution of 1:400 and CoraLite@488-Conjugated AffiniPure Goat Anti-Mouse IgG(H+L), CL594-Phalloidin (red).



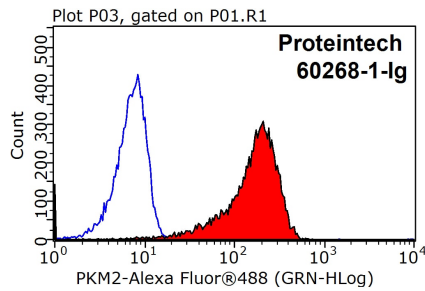
IP Result of anti-PKM2-specific (IP:60268-1-Ig, 5ug; Detection:15822-1-AP (PKM2-specific rabbit polyclonal antibody), 1:300) with HeLa cells lysate 2800ug.



Immunohistochemical analysis of paraffin-embedded human colon cancer tissue slide using 60268-1-Ig (PKM2-specific antibody at dilution of 1:500 (under 10x lens). Heat mediated antigen retrieval with Tris-EDTA buffer (pH 9.0).



Immunohistochemical analysis of paraffin-embedded human colon cancer tissue slide using 60268-1-Ig (PKM2-specific antibody at dilution of 1:500 (under 40x lens). Heat mediated antigen retrieval with Tris-EDTA buffer (pH 9.0).



1x10<sup>6</sup> HepG2 cells were stained with .2ug PKM2-specific antibody (60268-1-Ig, red) and control antibody (blue). Fixed with 90% MeOH blocked with 3% BSA (30 min). Alexa Fluor 488-conjugated AffiniPure Goat Anti-Mouse IgG(H+L) with dilution 1:1000.