

Allgemeine Informationen

Katalog-Nr.: 60271-1-Ig	GenBank-Zugangsnummer: BC002807	Reinigungsmethode: Protein-A-Reinigung
Größe: 150ul , Konzentration: 1000 µg/ml durch die Bradford-Methode mit BSA als Standard;	GeneID (NCBI): 931	CloneNo.: 4A7G3
Wirt: Maus	Vollständiger Name: membrane-spanning 4-domains, subfamily A, member 1	Empfohlene Verdünnungen: WB 1:5000-1:50000 IHC 1:1000-1:15000 IF 1:200-1:800
Isotyp: IgG2b	Berechnete Masse: 297 aa, 33 kDa	
Immunogen Katalognummer: AG17309	Beobachtete Masse: 35 kDa	

Anwendungen

Geprüfte Anwendungen: FC, IF, IHC, WB, ELISA	Positivkontrollen: WB : Raji-Zellen, Daudi-Zellen, Ramos-Zellen IHC : humanes Tonsillitisgewebe, humanes Appendizitis-Gewebe IF : humanes Tonsillitisgewebe, Raji-Zellen
In Publikationen genannte Anwendungen: IF, IHC	
Getestete Reaktivität: Human	
Zitierte Arten: Human	
Hinweis-IHC: Antigenmaskierung mit TE-Puffer pH 9,0 empfohlen. (*) Wahlweise kann die Antigenmaskierung auch mit Citratpuffer pH 6,0 erfolgen.	

Hintergrundinformationen

CD20 is a 33-37 kDa transmembrane phosphoprotein. CD20 is a B-lymphocyte surface molecule that is widely expressed during B-cell ontogeny, from early pre-B-cell developmental stages until final differentiation into plasma cells. CD20 functions as calcium-permeable cation channel. It is involved in the regulation of B-cell activation and proliferation. CD20 serves as a useful target for antibody-mediated therapeutic depletion of B-cells.

Bemerkenswerte Veröffentlichungen

Verfasser	Pubmed ID	Journal	Anwendung
Ye Nie	36190431	FASEBJ	IHC
Wenxing Yue	30911896	Virol Sin	IF
Zhixiu Xia	34127021	World J Surg Oncol	IHC

Lagerung

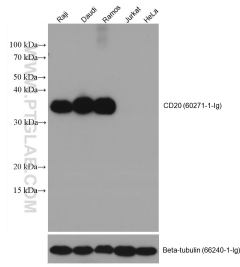
Lagerungsbedingungen:
Bei -20°C lagern. Nach dem Versand ein Jahr lang stabil
Lagerungspuffer:
PBS mit 0.02% Natriumazid und 50% Glycerin pH 7.3.
 Aliquotieren ist nicht notwendig bei -20°C Lagerung

***** 20ul-Größen enthalten 0.1% BSA**

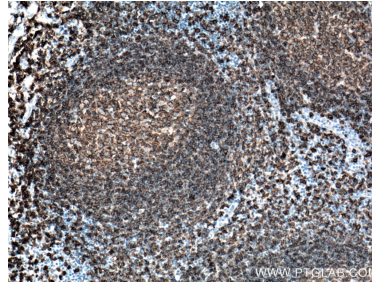
For technical support and original validation data for this product please contact:
 T: 1 (888) 4PTGLAB (1-888-478-4522) (toll free in USA), or 1(312) 455-8498 (outside USA)
 E: proteintech@ptglab.com
 W: ptglab.com

This product is exclusively available under Proteintech Group brand and is not available to purchase from any other manufacturer.

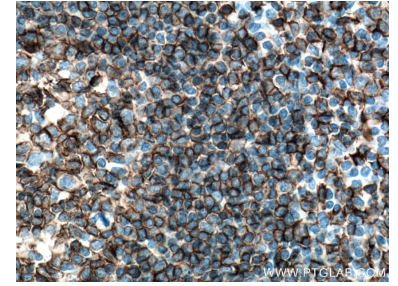
Ausgewählte Validierungsdaten



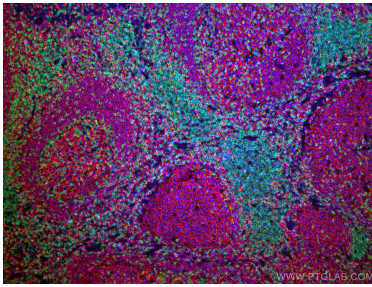
Raji cells (CD20+), Daudi cells (CD20+), Ramos cells (CD20+), Jurkat cells (CD20-), and HeLa cells (CD20-) were subjected to SDS PAGE followed by western blot with 60271-1-Ig (CD20 antibody) at dilution of 1:20000 incubated at room temperature for 1.5 hours.



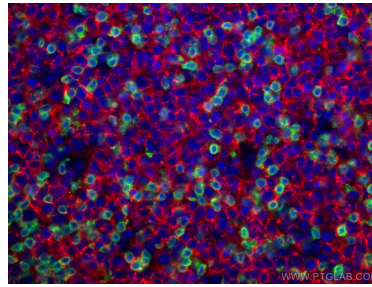
Immunohistochemical analysis of paraffin-embedded human tonsillitis tissue slide using 60271-1-Ig (CD20 antibody) at dilution of 1:12800 (under 10x lens. Heat mediated antigen retrieval with Tris-EDTA buffer (pH 9.0).



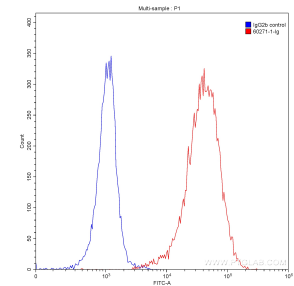
Immunohistochemical analysis of paraffin-embedded human tonsillitis tissue slide using 60271-1-Ig (CD20 antibody) at dilution of 1:12800 (under 40x lens. Heat mediated antigen retrieval with Tris-EDTA buffer (pH 9.0).



Immunofluorescent analysis of (4% PFA) fixed human tonsillitis tissue using CD20 antibody (60271-1-Ig, Clone: 4A7G3) at dilution of 1:400 and CoraLite®594-Conjugated AffiniPure Goat Anti-Mouse IgG(H+L), CD3 antibody (17617-1-AP, green).



Immunofluorescent analysis of (4% PFA) fixed human tonsillitis tissue using CD20 antibody (60271-1-Ig, Clone: 4A7G3) at dilution of 1:400 and CoraLite®594-Conjugated AffiniPure Goat Anti-Mouse IgG(H+L), CD3 antibody (17617-1-AP, green).



1×10^6 Raji cells were stained with 0.20 ug Anti-Human CD20 (60271-1-Ig, Clone:4A7G3) (red) or 0.20 ug Mouse IgG2b Isotype Control (66360-3-Ig, CloneK11B8C4B5) (blue) and CoraLite®488-Conjugated AffiniPure Goat Anti-Mouse IgG(H+L) with dilution 1:1000. Cells were fixed with 90% MeOH.