

Nur für Forschungszwecke

# FAM3C Monoklonaler Antikörper

Katalog-Nr.:60282-1-Ig



## Allgemeine Informationen

<b>Katalog-Nr.:</b> 60282-1-Ig	<b>GenBank-Zugangsnummer:</b> BC046932	<b>Reinigungsmethode:</b> Protein-A-Reinigung
<b>Größe:</b> 150ul , Konzentration: 1000 µg/ml von10447 Nanodrop und 620 µg/ml durch die Bradford-Methode mit BSA als Standard;	<b>GeneID (NCBI):</b> 10447	<b>CloneNo.:</b> 2E10D5
<b>Wirt:</b> Maus	<b>Vollständiger Name:</b> family with sequence similarity 3, member C	<b>Empfohlene Verdünnungen:</b> WB 1:500-1:2000 IHC 1:50-1:500 IF 1:50-1:500
<b>Isotyp:</b> IgG1	<b>Berechnete Masse:</b> 25 kDa	
<b>Immunogen Katalognummer:</b> AG5516	<b>Beobachtete Masse:</b> 25 kDa	

## Anwendungen

<b>Geprüfte Anwendungen:</b> IF, IHC, WB, ELISA	<b>Positivkontrollen:</b> WB : fetales humanes Hirngewebe, IHC : humanes Ösophaguskarzinomgewebe, IF : HepG2-Zellen,
<b>Getestete Reaktivität:</b> Human	
<b>Hinweis-IHC: Antigenmaskierung mit TE-Puffer pH 9,0 empfohlen. (*) Wahlweise kann die Antigenmaskierung auch mit Citratpuffer pH 6,0 erfolgen.</b>	

## Hintergrundinformationen

FAM3C, also known as ILEI, is a secreted protein belonging to the cytokine-like protein family. FAM3C is a signaling cytokine with a GG domain, hydrophobic leader sequence and an N-terminal signal peptide. A change in expression of this protein has been noted in pancreatic cancer-derived cells. FAM3C has been involved in the epithelial to mesenchymal transition, and retinal laminar formation processes in vertebrates. Also, FAM3C may play an important role in inner ear development and thus be involved in cell differentiation and proliferation during inner ear embryogenesis.

## Lagerung

**Lagerungsbedingungen:**  
Bei -20°C lagern. Nach dem Versand ein Jahr lang stabil  
**Lagerungspuffer:**  
PBS mit 0.02% Natriumazid und 50% Glycerin pH 7.3.  
**Aliquotieren ist nicht notwendig bei -20°C Lagerung**

\*\*\* 20ul-Größen enthalten 0.1% BSA

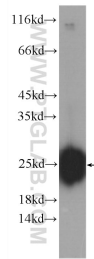
For technical support and original validation data for this product please contact:

T: 1 (888) 4PTGLAB (1-888-478-4522) (toll free  
in USA), or 1(312) 455-8498 (outside USA)

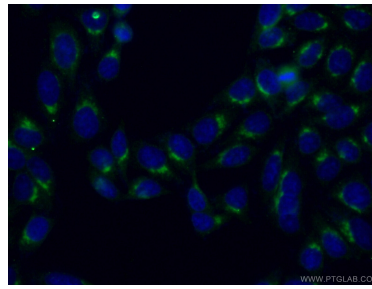
E: proteintech@ptglab.com  
W: ptglab.com

This product is exclusively available under Proteintech Group brand and is not available to purchase from any other manufacturer.

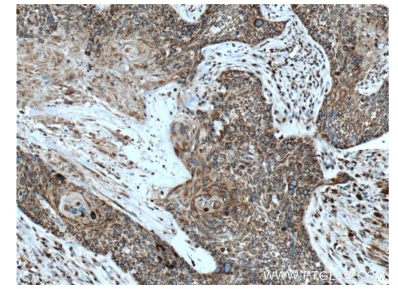
## Ausgewählte Validierungsdaten



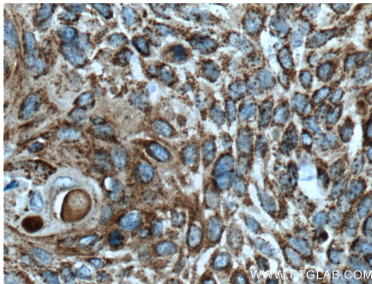
fetal human brain tissue were subjected to SDS PAGE followed by western blot with 60282-1-Ig (FAM3C Antibody) at dilution of 1:1000 incubated at room temperature for 1.5 hours.



Immunofluorescent analysis of (-20°C Ethanol) fixed HepG2 cells using 60282-1-Ig (FAM3C antibody) at dilution of 1:100 and Alexa Fluor 488-conjugated AffiniPure Goat Anti-Mouse IgG(H+L).



Immunohistochemical analysis of paraffin-embedded human oesophagus cancer tissue slide using 60282-1-Ig (FAM3C Antibody) at dilution of 1:200 (under 10x lens). Heat mediated antigen retrieval with Tris-EDTA buffer (pH 9.0).



Immunohistochemical analysis of paraffin-embedded human oesophagus cancer tissue slide using 60282-1-Ig (FAM3C Antibody) at dilution of 1:200 (under 40x lens). Heat mediated antigen retrieval with Tris-EDTA buffer (pH 9.0).