

Allgemeine Informationen

Katalog-Nr.: 60287-1-Ig	GenBank-Zugangsnummer: BC014239	Reinigungsmethode: Protein-A-Reinigung
Größe: 150ul , Konzentration: 2000 µg/ml von5788 Nanodrop;	GeneID (NCBI): 5788	CloneNo.: 4E9B2
Wirt: Maus	Vollständiger Name: protein tyrosine phosphatase, receptor type, C	Empfohlene Verdünnungen: WB 1:1000-1:4000 IHC 1:4000-1:16000 IF 1:50-1:500
Isotyp: IgG2a	Berechnete Masse: 1304 aa, 147 kDa	
Immunogen Katalognummer: AG13712	Beobachtete Masse: 220 kDa	

Anwendungen

Geprüfte Anwendungen:

FC, IF, IHC, WB, ELISA

In Publikationen genannte Anwendungen:

FC, IF, IHC, WB

Getestete Reaktivität:

Hausschwein, Human, Maus, Ratte

Zitierte Arten:

Hausschwein, Human, Maus, Ratte

Hinweis-IHC: Antigendemaskierung mit TE-Puffer pH 9,0 empfohlen. (*) Wahlweise kann die Antigendemaskierung auch mit Citratpuffer pH 6,0 erfolgen.

Positivkontrollen:

WB : Hausschwein-Milzgewebe, Raji-Zellen

IHC : humanes Appendizitis-Gewebe, humanes Kolongewebe, humanes Leberkarzinomgewebe, humanes Tonsillitisgewebe, Mausmilzgewebe, Ratten-Kolongewebe, Ratten-Thymusgewebe

IF : humanes Tonsillitisgewebe, Mausmilzgewebe

Hintergrundinformationen

CD45, also known as leukocyte common antigen (LCA), B220, and T200, is a 180-240 kD single chain type I membrane glycoprotein. It is a tyrosine phosphatase expressed on the plasma membrane of all hematopoietic cells, except erythrocytes and platelets. CD45 is a signaling molecule that regulates a variety of cellular processes including cell growth, differentiation, cell cycle, and oncogenic transformation. CD45 is one of the best negative selection markers for characterizing and/or isolating human mesenchymal stem cells from bone marrow and other sources. Along with the positive selection markers (such as CD29, CD44, CD90, CD105 and CD166), negative selection markers (such as CD34 and CD45) are used for MSC identification.

Bemerkenswerte Veröffentlichungen

Verfasser	Pubmed ID	Journal	Anwendung
Zhongwei Xin	36115836	Nat Commun	IF
Guang-Nan Jin	36067653	Int Immunopharmacol	IF
Beibei Zhang	34674752	Stem Cell Res Ther	IHC

Lagerung

Lagerungsbedingungen:

Bei -20°C lagern. Nach dem Versand ein Jahr lang stabil

Lagerungspuffer:

PBS mit 0.02% Natriumazid und 50% Glycerin pH 7.3.

Aliquotieren ist nicht notwendig bei -20°C Lagerung

***** 20ul-Größen enthalten 0.1% BSA**

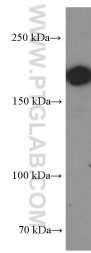
For technical support and original validation data for this product please contact:

T: 1 (888) 4PTGLAB (1-888-478-4522) (toll free in USA), or 1(312) 455-8498 (outside USA)

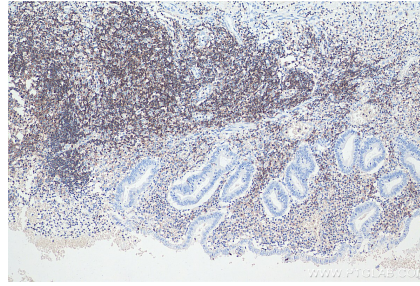
E: proteintech@ptglab.com
W: ptglab.com

This product is exclusively available under Proteintech Group brand and is not available to purchase from any other manufacturer.

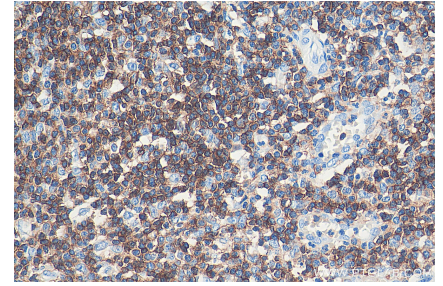
Ausgewählte Validierungsdaten



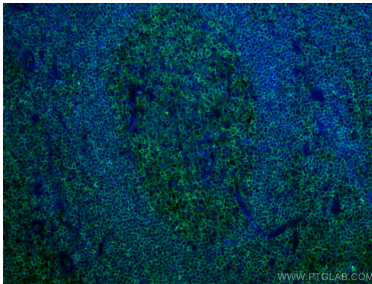
pig spleen tissue were subjected to SDS PAGE followed by western blot with 60287-1-Ig (CD45 Antibody) at dilution of 1:2000 incubated at room temperature for 1.5 hours.



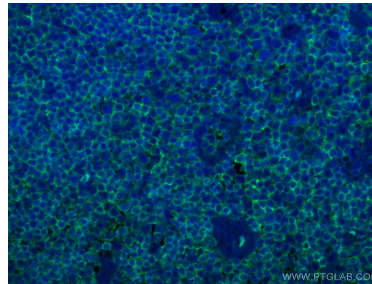
Immunohistochemical analysis of paraffin-embedded human appendicitis tissue slide using 60287-1-Ig (CD45 antibody) at dilution of 1:8000 (under 0x lens). Heat mediated antigen retrieval with Tris-EDTA buffer (pH 9.0).



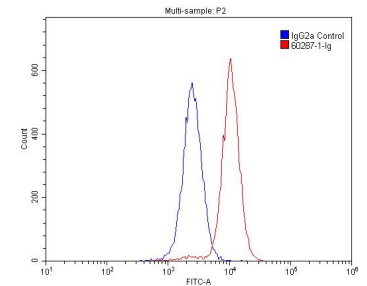
Immunohistochemical analysis of paraffin-embedded human appendicitis tissue slide using 60287-1-Ig (CD45 antibody) at dilution of 1:8000 (under 40x lens). Heat mediated antigen retrieval with Tris-EDTA buffer (pH 9.0).



Immunofluorescent analysis of (4% PFA) fixed human tonsillitis tissue using 60287-1-Ig (CD45 antibody), at dilution of 1:100 and CoraLite@488-Conjugated AffiniPure Goat Anti-Mouse IgG(H+L).



Immunofluorescent analysis of (4% PFA) fixed human tonsillitis tissue using 60287-1-Ig (CD45 antibody), at dilution of 1:100 and CoraLite@488-Conjugated AffiniPure Goat Anti-Mouse IgG(H+L).



1×10^6 Raji cells were stained with 0.2ug CD45 antibody (60287-1-Ig, red) and control antibody (blue). Fixed with 4% PFA blocked with 3% BSA (30 min). Alexa Fluor 488-conjugated AffiniPure Goat Anti-Mouse IgG(H+L) with dilution 1:1500.