

Nur für Forschungszwecke

U2AF35 Monoklonaler Antikörper

Katalog-Nr.:60289-1-Ig **4 Publikationen**



Allgemeine Informationen

Katalog-Nr.: 60289-1-Ig	GenBank-Zugangsnummer: BC001923	Reinigungsmethode: Protein-A-Reinigung
Größe: 150ul, Konzentration: 1800 µg/ml von7307 Nanodrop und 1107 µg/ml durch die Bradford-Methode mit BSA als Standard;	GeneID (NCBI): U2 small nuclear RNA auxiliary factor 1	CloneNo.: 2B7F11
Wirt: Maus	Vollständiger Name: U2 small nuclear RNA auxiliary factor 1	Empfohlene Verdünnungen: WB 1:1000-1:6000 IP 0.5-4.0 ug für IP und 1:500-1:1000 für WB
Isotyp: IgG2c	Berechnete Masse: 28 kDa	IHC 1:500-1:2000 IF 1:50-1:500
Immunogen Katalognummer: AG0399	Beobachtete Masse: 35-40 kDa	

Anwendungen

Geprüfte Anwendungen: IF, IHC, IP, WB, ELISA	Positivkontrollen: WB: HeLa-Zellen, COLO 320-Zellen, HEK-293-Zellen, Raji-Zellen, Ramos-Zellen IP: HeLa-Zellen, IHC: humanes Mammakarzinomgewebe, humanes Leberkarzinomgewebe IF: HepG2-Zellen,
In Publikationen genannte Anwendungen: WB	
Getestete Reaktivität: Human, Maus, Ratte	
Zitierte Arten: Human	

Hinweis-IHC: Antigenmaskierung mit TE-Puffer pH 9,0 empfohlen. (*) Wahlweise kann die Antigenmaskierung auch mit Citratpuffer pH 6,0 erfolgen.

Hintergrundinformationen

U2 auxiliary factor (U2AF), comprising a large and a small subunit, is a non-snRNP protein required for the binding of U2 snRNP to the pre-mRNA branch site. U2 (RNU2) small nuclear RNA auxiliary factor 1 (U2AF1, synonyms: RN, FP793, U2AF35, U2AFBP, RNU2AF1) is the small subunit which plays a critical role in both constitutive and enhancer-dependent RNA splicing by directly mediating interactions between the large subunit and proteins bound to the enhancers. The U2AF1 gene is localized to chromosome 21q22.3, which is the critical region for three diseases, progressive myoclonus epilepsy, autoimmune polyglandular disease type 1, and one form of bipolar affective disorder. The calculated molecular weight of U2AF35 is 28 kDa, but the modified U2AF35 protein is about 35-40 kDa.

Bemerkenswerte Veröffentlichungen

Verfasser	Pubmed ID	Journal	Anwendung
Li Chen	27683217	Nucleic Acids Res	WB
Qingyang Zhang	34551807	Mol Neurodegener	WB
Kazuhiro Fukumura	34389706	Nat Commun	WB

Lagerung

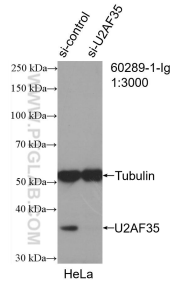
Lagerungsbedingungen:
Bei -20°C lagern. Nach dem Versand ein Jahr lang stabil
Lagerungspuffer:
PBS mit 0.02% Natriumazid und 50% Glycerin pH 7.3.
Aliquotieren ist nicht notwendig bei -20°C Lagerung

*** 20ul-Größen enthalten 0.1% BSA

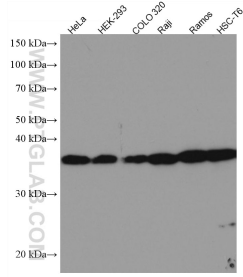
For technical support and original validation data for this product please contact:
T: 1 (888) 4PTGLAB (1-888-478-4522) (toll free in USA), or 1(312) 455-8498 (outside USA)
E: proteintech@ptglab.com
W: ptglab.com

This product is exclusively available under Proteintech Group brand and is not available to purchase from any other manufacturer.

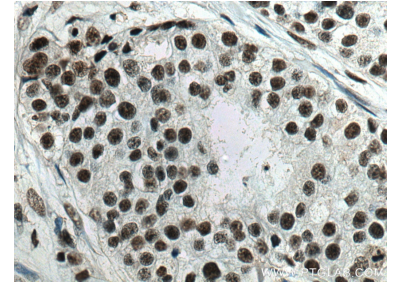
Ausgewählte Validierungsdaten



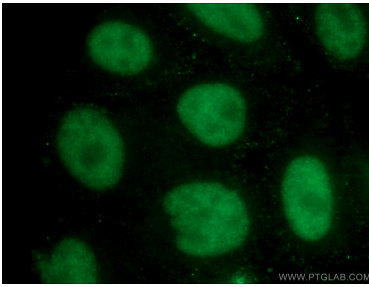
WB result of U2AF35 antibody (60289-1-Ig; 1:3000; incubated at room temperature for 1.5 hours) with sh-Control and sh-U2AF35 transfected HeLa cells.



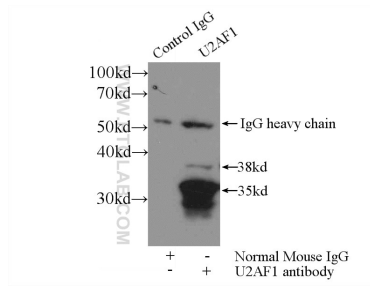
Various lysates were subjected to SDS PAGE followed by western blot with 60289-1-Ig (U2AF35 antibody) at dilution of 1:3000 incubated at room temperature for 1.5 hours.



Immunohistochemical analysis of paraffin-embedded human breast cancer tissue slide using 60289-1-Ig (U2AF35 antibody) at dilution of 1:1000 (under 40x lens). Heat mediated antigen retrieval with Tris-EDTA buffer (pH 9.0).



Immunofluorescent analysis of (4% PFA) fixed HepG2 cells using 60289-1-Ig (U2AF35 antibody) at dilution of 1:100 and Alexa Fluor 488-conjugated AffiniPure Goat Anti-Mouse IgG(H+L).



IP Result of anti-U2AF35 (IP:60289-1-Ig; 3ug; Detection:60289-1-Ig 1:500) with HeLa cells lysate 3000ug.