

Nur für Forschungszwecke

# Ras Monoklonaler Antikörper

Katalog-Nr.:60309-1-Ig

Vorgestelltes Produkt

13 Publikationen



## Allgemeine Informationen

Katalog-Nr.:  
60309-1-Ig

Größe:  
150ul, Konzentration: 830 µg/ml von  
Nanodrop und 500 µg/ml durch die  
Bradford-Methode mit BSA als  
Standard;

Wirt:  
Maus

Isotyp:  
IgG1

Immunogen Katalognummer:  
AG2700

GenBank-Zugangsnummer:  
BC013572

GeneID (NCBI):  
3845

Vollständiger Name:  
v-Ki-ras2 Kirsten rat sarcoma viral  
oncogene homolog

Berechnete Masse:  
188 aa, 21 kDa

Beobachtete Masse:  
21 kDa

Reinigungsmethode:  
Protein-A-Reinigung

CloneNo.:  
4H4G7

Empfohlene Verdünnungen:  
WB 1:20000-1:50000  
IP 0.5-4.0 µg für IP und 1:1000-1:4000  
für WB  
IHC 1:50-1:500

## Anwendungen

Geprüfte Anwendungen:

FC (Intra), IHC, IP, WB, ELISA

In Publikationen genannte Anwendungen:

IF, IHC, WB

Getestete Reaktivität:

Hausschwein, Huhn, Human, Kaninchen, Maus, Ratte

Zitierte Arten:

Hausschwein, Human, Maus, Ratte

**Hinweis-IHC: Antigendemaskierung mit TE-Puffer pH 9,0 empfohlen. (\*) Wahlweise kann die Antigendemaskierung auch mit Citratpuffer pH 6,0 erfolgen.**

Positivkontrollen:

WB : fetales humanes Hirngewebe, Hausschwein-Hirngewebe, HEK-293-Zellen, Hühnerhirngewebe, humanes Hirngewebe, Kaninchenhirngewebe, Maushirngewebe, Neuro-2a-Zellen, Rattenhirngewebe, ROS1728-Zellen

IP : Maushirngewebe,

IHC : humanes Mammakarzinomgewebe, humanes Kolonkarzinomgewebe, humanes Lungenkarzinomgewebe

## Hintergrundinformationen

The 21 kDa guanine-nucleotide binding proteins (K-Ras, H-Ras, and N-Ras) belong to the Ras oncogene family, whose members are related to the transforming genes of mammalian sarcoma retroviruses. K-Ras, H-Ras, and N-Ras have similar structure and sequences. These proteins can bind GTP and GDP, and they have intrinsic GTPase activity. The ras genes are ubiquitously expressed although mRNA analysis suggests different level expression in tissue. Mutations in each ras gene frequently were found in different tumors, suggesting their involvement in the development of specific neoplasia. This antibody can recognize K-Ras, H-Ras, and N-Ras.

## Bemerkenswerte Veröffentlichungen

Verfasser	Pubmed ID	Journal	Anwendung
Peng Yuan	27793842	Cancer Res	WB
Jia-Qing Zhang	33079330	Reprod Sci	WB
Wei Wang	33021072	J Cell Mol Med	WB

## Lagerung

Lagerungsbedingungen:

Bei -20°C lagern. Nach dem Versand ein Jahr lang stabil

Lagerungspuffer:

PBS mit 0.02% Natriumazid und 50% Glycerin pH 7.3.

Aliquotieren ist nicht notwendig bei -20°C Lagerung

\*\*\* 20ul-Größen enthalten 0.1% BSA

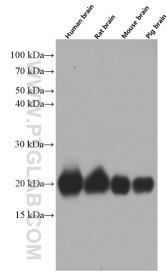
For technical support and original validation data for this product please contact:

T: 1 (888) 4PTGLAB (1-888-478-4522) (toll free in USA), or 1(312) 455-8498 (outside USA)

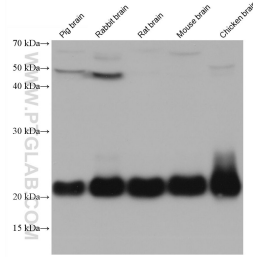
E: proteintech@ptglab.com  
W: ptglab.com

This product is exclusively available under Proteintech Group brand and is not available to purchase from any other manufacturer.

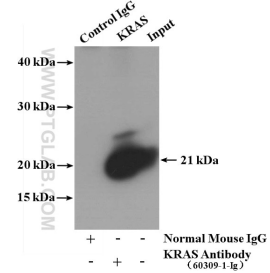
## Ausgewählte Validierungsdaten



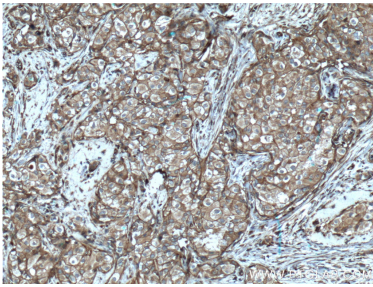
Various lysates were subjected to SDS PAGE followed by western blot with 60309-1-Ig (pan Ras Antibody) at dilution of 1:50000 incubated at room temperature for 1.5 hours.



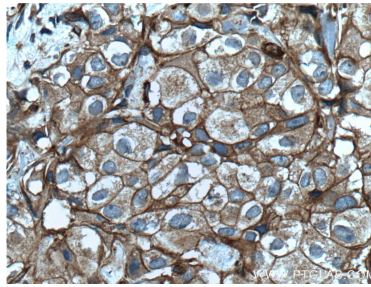
Various lysates were subjected to SDS PAGE followed by western blot with 60309-1-Ig (pan Ras antibody) at dilution of 1:50000 incubated at room temperature for 1.5 hours.



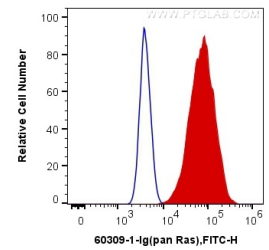
IP result of anti-pan Ras (IP:60309-1-Ig, 5ug; Detection:60309-1-Ig 1:2000) with mouse brain tissue lysate 4000 ug.



Immunohistochemical analysis of paraffin-embedded human breast cancer tissue slide using 60309-1-Ig (pan Ras Antibody) at dilution of 1:200 (under 10x lens). Heat mediated antigen retrieval with Tris-EDTA buffer (pH 9.0).



Immunohistochemical analysis of paraffin-embedded human breast cancer tissue slide using 60309-1-Ig (pan Ras Antibody) at dilution of 1:200 (under 40x lens). Heat mediated antigen retrieval with Tris-EDTA buffer (pH 9.0).



$1 \times 10^6$  HeLa cells were intracellularly stained with 0.4 ug Anti-Human pan Ras (60309-1-Ig, Clone:4H4G7) and CoraLite®488-Conjugated AffiniPure Goat Anti-Mouse IgG(H+L) at dilution 1:1000 (red), or 0.4 ug Control Antibody. Cells were fixed with 4% PFA and permeabilized with Flow Cytometry Perm Buffer (PF00011-C).