

Nur für Forschungszwecke

# HER2/ErbB2 Monoklonaler Antikörper



Katalog-Nr.: 60311-1-Ig **4 Publikationen**

## Allgemeine Informationen

<b>Katalog-Nr.:</b> 60311-1-Ig	<b>GenBank-Zugangsnummer:</b> BC156755	<b>Reinigungsmethode:</b> Protein-A-Reinigung
<b>Größe:</b> 150ul, Konzentration: 1500 µg/ml von2064 Nanodrop und 1000 µg/ml durch die Bradford-Methode mit BSA als Standard;	<b>GeneID (NCBI):</b> v-erb-b2 erythroblastic leukemia viral oncogene homolog 2, neuro/glioblastoma derived oncogene homolog (avian)	<b>CloneNo.:</b> 1B12A7
<b>Wirt:</b> Maus	<b>Vollständiger Name:</b> v-erb-b2 erythroblastic leukemia viral oncogene homolog 2, neuro/glioblastoma derived oncogene homolog (avian)	<b>Empfohlene Verdünnungen:</b> IHC 1:800-1:3200 IF 1:50-1:500
<b>Isotyp:</b> IgG2b	<b>Berechnete Masse:</b> 1255 aa, 138 kDa	
<b>Immunogen Katalognummer:</b> AG16463		

## Anwendungen

<b>Geprüfte Anwendungen:</b> FC, IF, IHC, ELISA	<b>Positivkontrollen:</b> IHC : humanes Mammakarzinomgewebe, IF : humanes Mammakarzinomgewebe,
<b>In Publikationen genannte Anwendungen:</b> IF, IHC	
<b>Getestete Reaktivität:</b> Human	
<b>Zitierte Arten:</b> Human	
<b>Hinweis-IHC: Antigenmaskierung mit TE-Puffer pH 9,0 empfohlen. (*) Wahlweise kann die Antigenmaskierung auch mit Citratpuffer pH 6,0 erfolgen.</b>	

## Hintergrundinformationen

HER2, also known as ErbB2 and Neu, is a 185-kDa transmembrane glycoprotein that is a member of the epidermal growth factor (EGF) receptor family of receptor tyrosine kinases. It has no ligand binding domain of its own and therefore cannot bind growth factors. However, it does bind tightly to other ligand-bound EGF receptor family members to form a heterodimer, stabilizing ligand binding and enhancing kinase-mediated activation of downstream signalling pathways, such as those involving mitogen-activated protein kinase and phosphatidylinositol-3 kinase. Amplification and/or overexpression of HER2 have been reported in numerous cancers, including breast and ovarian tumors. HER2 is a therapeutic target for the treatment of breast cancer and other carcinomas.

## Bemerkenswerte Veröffentlichungen

Verfasser	Pubmed ID	Journal	Anwendung
Yanlin Wu	30127983	Oncol Lett	IHC
Fei Xing	36627608	Mol Cancer	IF
Xin Zhou	32127954	J Cancer	IHC

## Lagerung

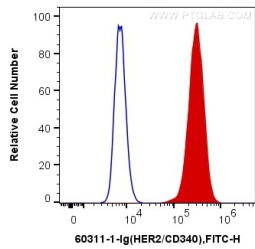
**Lagerungsbedingungen:**  
Bei -20°C lagern. Nach dem Versand ein Jahr lang stabil  
**Lagerungspuffer:**  
PBS mit 0.02% Natriumazid und 50% Glycerin pH 7.3.  
Aliquotieren ist nicht notwendig bei -20°C Lagerung

\*\*\* 20ul-Größen enthalten 0.1% BSA

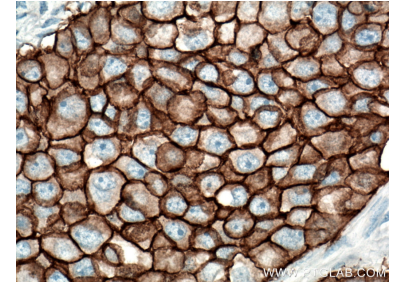
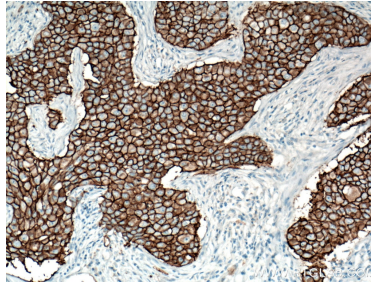
For technical support and original validation data for this product please contact:  
T: 1 (888) 4PTGLAB (1-888-478-4522) (toll free in USA), or 1(312) 455-8498 (outside USA)  
E: proteintech@ptglab.com  
W: ptglab.com

This product is exclusively available under Proteintech Group brand and is not available to purchase from any other manufacturer.

## Ausgewählte Validierungsdaten

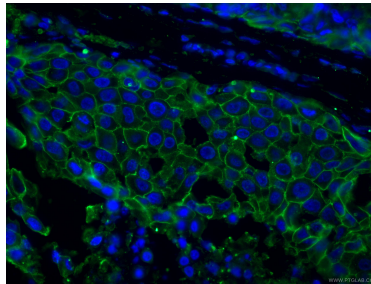
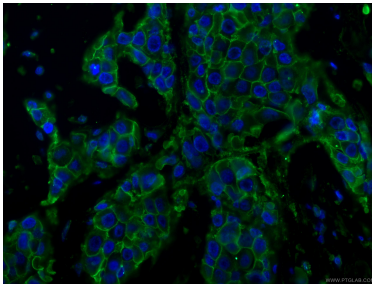


1X10<sup>6</sup> SK-BR-3 cells were intracellularly stained with 0.4 ug Anti-Human HER2/ErbB2 (60311-1-Ig, Clone:1B12A7) and CoraLite®488-Conjugated AffiniPure Goat Anti-Mouse IgG(H+L) at dilution 1:1000 (red), or 0.4 ug Mouse IgG2b Isotype Control (66360-3-Ig, Clone: K11B8C4B5) (blue). Cells were fixed with 4% PFA and permeabilized with Flow Cytometry Perm Buffer (PF00011-C).



Immunohistochemical analysis of paraffin-embedded human breast cancer tissue slide using 60311-1-Ig (HER2/ErbB2 antibody) at dilution of 1:1600 (under 10x lens). Heat mediated antigen retrieval with Tris-EDTA buffer (pH 9.0).

Immunohistochemical analysis of paraffin-embedded human breast cancer tissue slide using 60311-1-Ig (HER2/ErbB2 antibody) at dilution of 1:1600 (under 40x lens). Heat mediated antigen retrieval with Tris-EDTA buffer (pH 9.0).



Immunofluorescent analysis of (4% PFA) fixed human breast cancer tissue using 60311-1-Ig (HER2/ErbB2 antibody), at dilution of 1:200 and CoraLite®488-Conjugated AffiniPure Goat Anti-Mouse IgG(H+L).

Immunofluorescent analysis of (4% PFA) fixed human breast cancer tissue using 60311-1-Ig (HER2/ErbB2 antibody), at dilution of 1:200 and CoraLite®488-Conjugated AffiniPure Goat Anti-Mouse IgG(H+L).