

Nur für Forschungszwecke

c-SRC Monoklonaler Antikörper

Katalog-Nr.: 60315-1-Ig **9 Publikationen**



Allgemeine Informationen

Katalog-Nr.: 60315-1-Ig	GenBank-Zugangsnummer: BC011566	Reinigungsmethode: Protein-A-Reinigung
Größe: 150ul, Konzentration: 1500 µg/ml von6714 Nanodrop und 1000 µg/ml durch die Bradford-Methode mit BSA als Standard;	GeneID (NCBI): v-src sarcoma (Schmidt-Ruppin A-2) viral oncogene homolog (avian)	CloneNo.: 5E10C4
Wirt: Maus	Berechnete Masse: 60 kDa	Empfohlene Verdünnungen: WB 1:5000-1:50000 IHC 1:100-1:400 IF 1:50-1:500
Isotyp: IgG2b	Beobachtete Masse: 60 kDa	
Immunogen Katalognummer: AG22306		

Anwendungen

Geprüfte Anwendungen: IF, IHC, WB, ELISA	Positivkontrollen:
In Publikationen genannte Anwendungen: IF, WB	WB: HeLa-Zellen, 4T1-Zellen, CHO-Zellen, HEK-293-Zellen, HepG2-Zellen, Jurkat-Zellen, NIH/3T3-Zellen, PC-12-Zellen, RAW 264.7-Zellen
Getestete Reaktivität: Hamster, Human, Maus, Ratte	IHC: humanes Mammakarzinomgewebe,
Zitierte Arten: Human, Maus	IF: MCF-7-Zellen,
Hinweis-IHC: Antigenmaskierung mit TE-Puffer pH 9,0 empfohlen. (*) Wahlweise kann die Antigenmaskierung auch mit Citratpuffer pH 6,0 erfolgen.	

Hintergrundinformationen

SRC, also named as SRC1 and p60-Src, belongs to the protein kinase superfamily, Tyr protein kinase family and SRC subfamily. It is a non-receptor protein tyrosine kinase that plays pivotal roles in numerous cellular processes such as proliferation, migration, and transformation. In concert with PTK2B, SRC plays an important role in osteoclastic bone resorption. It promotes energy production in osteoclasts by activating mitochondrial cytochrome C oxidase.

Bemerkenswerte Veröffentlichungen

Verfasser	Pubmed ID	Journal	Anwendung
Fan Yang	26347956	Nat Commun	WB
Márcia Faria	36358781	Cancers (Basel)	WB
Shiyu Wu	34821070	Adv Sci (Weinh)	IF

Lagerung

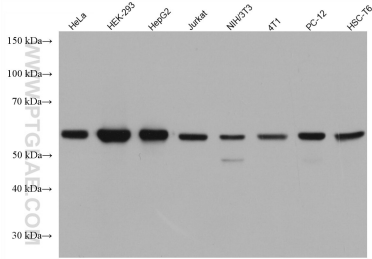
Lagerungsbedingungen:
Bei -20°C lagern. Nach dem Versand ein Jahr lang stabil
Lagerungspuffer:
PBS mit 0.02% Natriumazid und 50% Glycerin pH 7.3.
Aliquotieren ist nicht notwendig bei -20°C Lagerung

*** 20ul-Größen enthalten 0.1% BSA

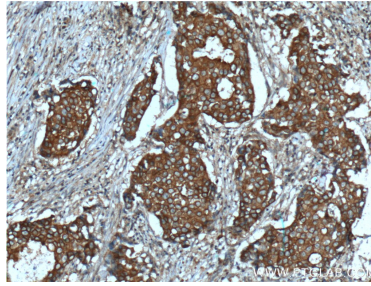
For technical support and original validation data for this product please contact:
T: 1 (888) 4PTGLAB (1-888-478-4522) (toll free in USA), or 1(312) 455-8498 (outside USA)
E: proteintech@ptglab.com
W: ptglab.com

This product is exclusively available under Proteintech Group brand and is not available to purchase from any other manufacturer.

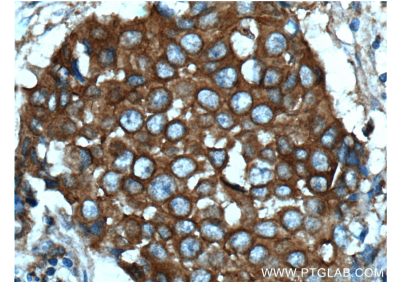
Ausgewählte Validierungsdaten



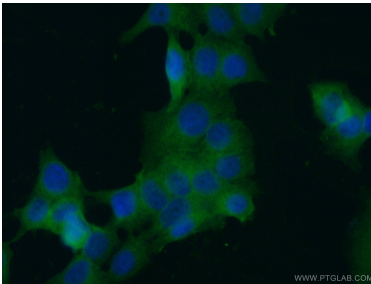
Various lysates were subjected to SDS PAGE followed by western blot with 60315-1-Ig (c-SRC antibody) at dilution of 1:10000 incubated at room temperature for 1.5 hours.



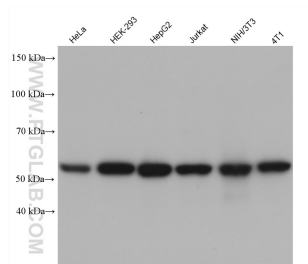
Immunohistochemical analysis of paraffin-embedded human breast cancer tissue slide using 60315-1-Ig (c-SRC Antibody) at dilution of 1:200 (under 10x lens). Heat mediated antigen retrieval with Tris-EDTA buffer (pH 9.0).



Immunohistochemical analysis of paraffin-embedded human breast cancer tissue slide using 60315-1-Ig (c-SRC Antibody) at dilution of 1:200 (under 40x lens). Heat mediated antigen retrieval with Tris-EDTA buffer (pH 9.0).



Immunofluorescent analysis of (-20°C Ethanol) fixed MCF-7 cells using 60315-1-Ig(c-SRC antibody) at dilution of 1:100 and Alexa Fluor 488-conjugated AffiniPure Goat Anti-Mouse IgG(H+L).



Various lysates were subjected to SDS PAGE followed by western blot with 60315-1-Ig (c-SRC antibody) at dilution of 1:10000 incubated at room temperature for 1.5 hours.