

Nur für Forschungszwecke

ALK Monoklonaler Antikörper

Katalog-Nr.: 60321-1-Ig **2 Publikationen**



Allgemeine Informationen

Katalog-Nr.: 60321-1-Ig	GenBank-Zugangsnummer: NM_004304	Reinigungsmethode: Protein-A-Reinigung
Größe: 150ul, Konzentration: 2000 µg/ml von 238 Nanodrop und 1600 µg/ml durch die Bradford-Methode mit BSA als Standard;	GeneID (NCBI): anaplastic lymphoma receptor tyrosine kinase	CloneNo.: 7G9E3
Wirt: Maus	Vollständiger Name: anaplastic lymphoma receptor tyrosine kinase	Empfohlene Verdünnungen: WB 1:500-1:2000 IHC 1:200-1:800
Isotyp: IgG2a	Berechnete Masse: 1620 aa, 176 kDa	
Immunogen Katalognummer: AG21493		

Anwendungen

Geprüfte Anwendungen: IHC, WB, ELISA	Positivkontrollen: WB: Recombinant protein, IHC: humanes Lymphomgewebe,
In Publikationen genannte Anwendungen: WB	
Getestete Reaktivität: Human	
Zitierte Arten: Human	
Hinweis-IHC: Antigenmaskierung mit TE-Puffer pH 9,0 empfohlen. (*) Wahlweise kann die Antigenmaskierung auch mit Citratpuffer pH 6,0 erfolgen.	

Hintergrundinformationen

ALK, also named as CD246, is a receptor tyrosine kinase (RTK) that belongs to the protein kinase superfamily. ALK is usually found in the nervous system and appears to play an important role in the normal development and function of the nervous system. ALK was originally identified as part of the NPM (Nucleophosmin)-ALK oncogenic fusion protein, resulting from the (2;5)(p23;q35) translocation that is frequently associated with anaplastic large-cell lymphoma (ALCL). The EML4 (echinoderm microtubule-associated protein-like 4)-ALK fusion protein have been described in non-small-cell lung cancer (NSCLC), this transforming fusion kinase is a promising candidate for a therapeutic target as well as for a diagnostic molecular marker in NSCLC (PMID: 17625570).

Bemerkenswerte Veröffentlichungen

Verfasser	Pubmed ID	Journal	Anwendung
D Kong	25997961	Neoplasma	WB
Tao Pan	34237620	Eur J Med Chem	WB

Lagerung

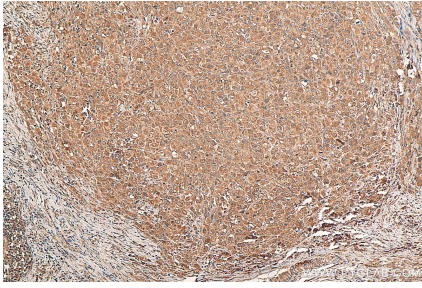
Lagerungsbedingungen:
Bei -20°C lagern. Nach dem Versand ein Jahr lang stabil
Lagerungspuffer:
PBS mit 0.02% Natriumazid und 50% Glycerin pH 7.3.
Aliquotieren ist nicht notwendig bei -20°C Lagerung

*** 20ul-Größen enthalten 0.1% BSA

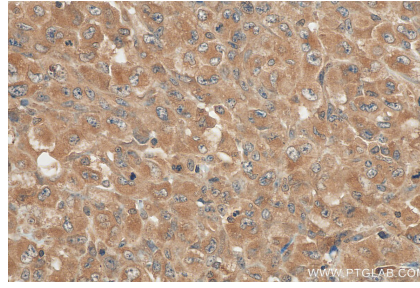
For technical support and original validation data for this product please contact:
T: 1 (888) 4PTGLAB (1-888-478-4522) (toll free in USA), or 1(312) 455-8498 (outside USA)
E: proteintech@ptglab.com
W: ptglab.com

This product is exclusively available under Proteintech Group brand and is not available to purchase from any other manufacturer.

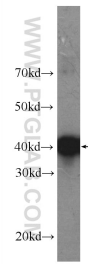
Ausgewählte Validierungsdaten



Immunohistochemical analysis of paraffin-embedded human anaplastic large cell lymphoma (ALCL) tissue slide using 60321-1-Ig (ALK antibody) at dilution of 1:400 (under 10x lens). Heat mediated antigen retrieval with Tris-EDTA buffer (pH 9.0).



Immunohistochemical analysis of paraffin-embedded human anaplastic large cell lymphoma (ALCL) tissue slide using 60321-1-Ig (ALK/CD246 antibody) at dilution of 1:400 (under 40x lens). Heat mediated antigen retrieval with Tris-EDTA buffer (pH 9.0).



Recombinant protein were subjected to SDS PAGE followed by western blot with 60321-1-Ig (ALK Antibody) at dilution of 1:1000 incubated at room temperature for 1.5 hours.