

Nur für Forschungszwecke

CD39/ENTPD1 Monoklonaler Antikörper

Katalog-Nr.:60323-1-Ig



Allgemeine Informationen

| | | |
|---|---|--|
| Katalog-Nr.: 60323-1-Ig | GenBank-Zugangsnummer: BC047664 | Reinigungsmethode: Protein-A-Reinigung |
| Größe: 150ul , Konzentration: 1300 µg/ml von953 Nanodrop und 1000 µg/ml durch die Bradford-Methode mit BSA als Standard; | GeneID (NCBI): Vollständiger Name: ectonucleoside triphosphate diphosphohydrolase 1 | CloneNo.: 2D2H6 Empfohlene Verdünnungen: WB 1:500-1:1000 IHC 1:50-1:500 IF 1:20-1:200 |
| Wirt: Maus | Berechnete Masse: 58 kDa | |
| Isotyp: IgG2a | Beobachtete Masse: 54 kDa | |
| Immunogen Katalognummer: AG6165 | | |

Anwendungen

| | |
|---|---|
| Geprüfte Anwendungen: FC, IF, IHC, WB, ELISA | Positivkontrollen: WB : Jurkat-Zellen, IHC : humanes Plazenta-Gewebe, IF : HeLa-Zellen, |
| Getestete Reaktivität: Human | |
| Hinweis-IHC: Antigenmaskierung mit TE-Puffer pH 9,0 empfohlen. (*) Wahlweise kann die Antigenmaskierung auch mit Citratpuffer pH 6,0 erfolgen. | |

Hintergrundinformationen

ENTPD1(Ectonucleoside triphosphate diphosphohydrolase 1) is also named as CD39, NTPDase 1, Ecto-ATPDase 1 and belongs to the GDA1/CD39 NTPase family. In the nervous system, it can hydrolyze ATP and other nucleotides to regulate purinergic neurotransmission.It is a noncovalent tetrameric protein and that detergent inhibition of enzymatic activity is caused by dissociation of ectoapyrase tetramers into monomers(PMID: 9733785).And it is a 70- to 100-kDa protein that is heavily N-glycosylated(PMID:7930580). This protein has 6 glycosylation sites and 3 isoforms(58 kDa, 59 kDa and 34 kDa) produced by alternative splicing. The soluble isoform of CD39(38-478 amino acid) locates to the extracellular part and 60323-1-Ig can recognize the soluble form of CD39 (38-478aa) molecule.

Lagerung

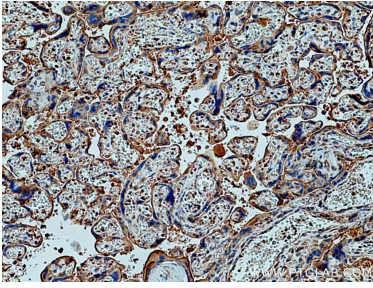
Lagerungsbedingungen:
Bei -20°C lagern. Nach dem Versand ein Jahr lang stabil
Lagerungspuffer:
PBS mit 0.02% Natriumazid und 50% Glycerin pH 7.3.
Aliquotieren ist nicht notwendig bei -20°C Lagerung

*** 20ul-Größen enthalten 0.1% BSA

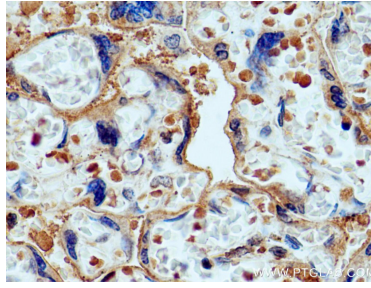
For technical support and original validation data for this product please contact:
T: 1 (888) 4PTGLAB (1-888-478-4522) (toll free in USA), or 1(312) 455-8498 (outside USA)
E: proteintech@ptglab.com
W: ptglab.com

This product is exclusively available under Proteintech Group brand and is not available to purchase from any other manufacturer.

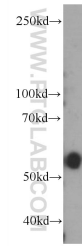
Ausgewählte Validierungsdaten



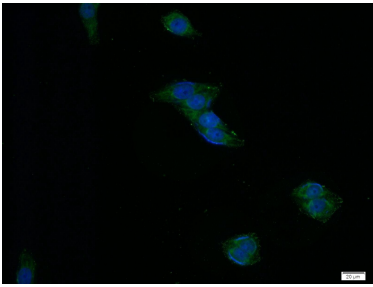
Immunohistochemical analysis of paraffin-embedded human placenta tissue slide using 60323-1-Ig (CD39/ENTPD1 antibody) at dilution of 1:100 (under 10x lens). Heat mediated antigen retrieval with Tris-EDTA buffer (pH 9.0).



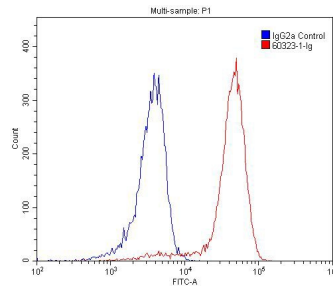
Immunohistochemical analysis of paraffin-embedded human placenta tissue slide using 60323-1-Ig (CD39/ENTPD1 antibody) at dilution of 1:100 (under 40x lens). Heat mediated antigen retrieval with Tris-EDTA buffer (pH 9.0).



Jurkat cells were subjected to SDS PAGE followed by western blot with 60323-1-Ig (ENTPD1 Antibody) at dilution of 1:500 incubated at room temperature for 1.5 hours.



Immunofluorescent analysis of HeLa cells using 60323-1-Ig (ENTPD1 antibody) at dilution of 1:50 and Alexa Fluor 488-conjugated AffiniPure Goat Anti-Mouse IgG (H+L).



1×10^6 Jurkat cells were stained with 0.2ug ENTDP1 antibody (60323-1-Ig, red) and control antibody (blue). Fixed with 4% PFA blocked with 3% BSA (30 min). Alexa Fluor 488-conjugated AffiniPure Goat Anti-Mouse IgG(H+L) with dilution 1:1500.