

Allgemeine Informationen

Katalog-Nr.: 60325-1-Ig	GenBank-Zugangsnummer: BC018128	Reinigungsmethode: Protein-A-Reinigung
Größe: 150ul , Konzentration: 1800 µg/ml von2260 Nanodrop und 1120 µg/ml durch die Bradford-Methode mit BSA als Standard;	GeneID (NCBI): 10F12E7	CloneNo.: 10F12E7
Wirt: Maus	Vollständiger Name: fibroblast growth factor receptor 1	Empfohlene Verdünnungen: WB 1:1000-1:3000 IHC 1:50-1:500
Isotyp: IgG2c	Berechnete Masse: 820 aa, 91 kDa	
Immunogen Katalognummer: AG3646	Beobachtete Masse: 91 kDa	

Anwendungen

Geprüfte Anwendungen: FC, IHC, WB, ELISA	Positivkontrollen: WB : MCF-7-Zellen, 4T1-Zellen, HT-1080.Zellen, HUVEC-Zellen, K-562-Zellen, NIH/3T3-Zellen, U2OS-Zellen, Y79-Zellen
In Publikationen genannte Anwendungen: IF, IHC, WB	IHC : humanes Mammakarzinomgewebe,
Getestete Reaktivität: Human, Maus, Ratte	
Zitierte Arten: Human	
Hinweis-IHC: Antigenmaskierung mit TE-Puffer pH 9,0 empfohlen. (*) Wahlweise kann die Antigenmaskierung auch mit Citratpuffer pH 6,0 erfolgen.	

Hintergrundinformationen

Fibroblast growth factor receptor 1 (FGFR1) is a tyrosine-protein kinase that acts as cell-surface receptor for fibroblast growth factors. FGFR1 has been implicated in diverse biological processes including embryonic development, cell proliferation, differentiation, migration, and tumorigenesis. Mutations in FGFR1 gene have been associated with Pfeiffer syndrome, Jackson-Weiss syndrome, Antley-Bixler syndrome, osteoglyphonic dysplasia, squamous cell lung cancer and autosomal dominant Kallmann syndrome. Alternatively spliced variants which encode different protein isoforms have been described.

Bemerkenswerte Veröffentlichungen

Verfasser	Pubmed ID	Journal	Anwendung
Lili Yang	28928430	Sci Rep	WB,IHC
Libo Hou	28889064	Mol Immunol	WB
T Wang	26535691	Genet Mol Res	WB

Lagerung

Lagerungsbedingungen:
Bei -20°C lagern. Nach dem Versand ein Jahr lang stabil

Lagerungspuffer:
PBS mit 0.02% Natriumazid und 50% Glycerin pH 7.3.

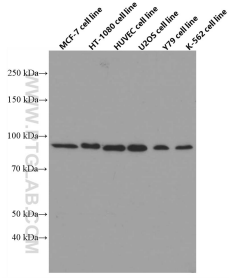
Aliquotieren ist nicht notwendig bei -20°C Lagerung

***** 20ul-Größen enthalten 0.1% BSA**

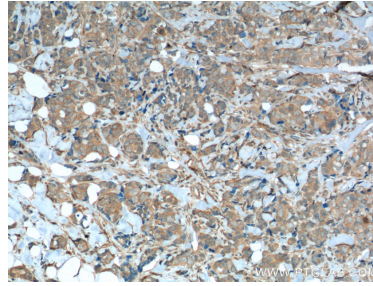
For technical support and original validation data for this product please contact:
 T: 1 (888) 4PTGLAB (1-888-478-4522) (toll free in USA), or 1(312) 455-8498 (outside USA)
 E: proteintech@ptglab.com
 W: ptglab.com

This product is exclusively available under Proteintech Group brand and is not available to purchase from any other manufacturer.

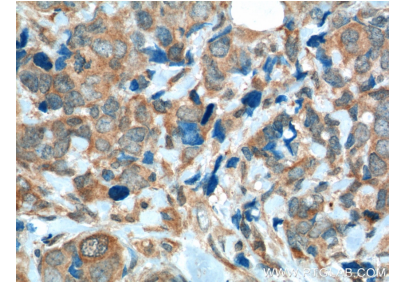
Ausgewählte Validierungsdaten



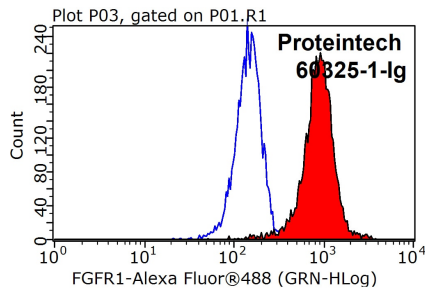
MCF-7, HT-1080, HUVEC, U2OS, Y79, and K-562 cells were subjected to SDS PAGE followed by western blot with 60325-1-Ig (FGFR1 antibody) at dilution of 1:3000 incubated at room temperature for 1.5 hours.



Immunohistochemical analysis of paraffin-embedded human breast cancer tissue slide using 60325-1-Ig (FGFR1 Antibody) at dilution of 1:200 (under 10x lens). Heat mediated antigen retrieval with Tris-EDTA buffer (pH 9.0).



Immunohistochemical analysis of paraffin-embedded human breast cancer tissue slide using 60325-1-Ig (FGFR1 Antibody) at dilution of 1:200 (under 40x lens). Heat mediated antigen retrieval with Tris-EDTA buffer (pH 9.0).



1X10⁶ K-562 cells were stained with 0.2ug FGFR1 antibody (60325-1-Ig, red) and control antibody (blue). Fixed with 90% MeOH blocked with 3% BSA (30 min). Alexa Fluor 488-conjugated AffiniPure Goat Anti-Mouse IgG(H+L) with dilution 1:1000.