

Nur für Forschungszwecke

# EEF1B2 Monoklonaler Antikörper

Katalog-Nr.:60329-1-Ig

Vorgestelltes Produkt



## Allgemeine Informationen

**Katalog-Nr.:**  
60329-1-Ig

**Größe:**  
150ul, Konzentration: 1800 µg/ml von1933  
Nanodrop und 1000 µg/ml durch die  
Bradford-Methode mit BSA als  
Standard;

**Wirt:**  
Maus

**Isotyp:**  
IgG1

**Immunogen Katalognummer:**  
AG0135

**GenBank-Zugangsnummer:**  
BC000211

**GeneID (NCBI):**

**Vollständiger Name:**  
eukaryotic translation elongation  
factor 1 beta 2

**Berechnete Masse:**  
25 kDa

**Beobachtete Masse:**  
30-34 kDa

**Reinigungsmethode:**  
Protein-G-Reinigung

**CloneNo.:**  
3E1C11

**Empfohlene Verdünnungen:**  
WB 1:2000-1:10000  
IF 1:50-1:500

## Anwendungen

**Geprüfte Anwendungen:**

IF, WB, ELISA

**Getestete Reaktivität:**

Human, Maus, Ratte

**Positivkontrollen:**

**WB :** HeLa-Zellen, HEK-293-Zellen, HepG2-Zellen,  
Jurkat-Zellen, K-562-Zellen, NIH/3T3-Zellen, PC-12-  
Zellen, RAW 264.7-Zellen

**IF :** HeLa-Zellen,

## Hintergrundinformationen

In eukaryotes, the translation elongation factor eEF1A responsible for transporting amino-acylated tRNA to the ribosome forms a higher-order complex, eEF1H, with its guanine-nucleotide-exchange factor eEF1B. eEF1B consists of three subunits: eEF1B alpha, eEF1B beta and eEF1B gamma. The eEF1B2 possess the nucleotide-exchange activity. Although several models on the basis of in vitro experiments have been proposed for the macromolecular organization of the eEF1H complex, these models differ in various aspects. The human eukaryote elongation factor 1 beta 2 (eEF1B2) migrated as a 30-34 kDa protein in SDS-PAGE.

## Lagerung

**Lagerungsbedingungen:**

Bei -20°C lagern. Nach dem Versand ein Jahr lang stabil

**Lagerungspuffer:**

PBS mit 0.02% Natriumazid und 50% Glycerin pH 7.3.

Aliquotieren ist nicht notwendig bei -20°C Lagerung

\*\*\* 20ul-Größen enthalten 0.1% BSA

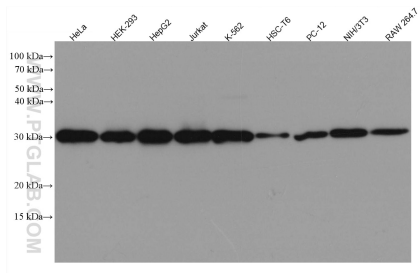
For technical support and original validation data for this product please contact:

T: 1 (888) 4PTGLAB (1-888-478-4522) (toll free  
in USA), or 1(312) 455-8498 (outside USA)

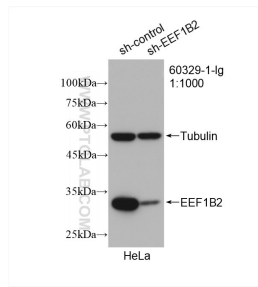
E: proteintech@ptglab.com  
W: ptglab.com

This product is exclusively available under Proteintech Group brand and is not available to purchase from any other manufacturer.

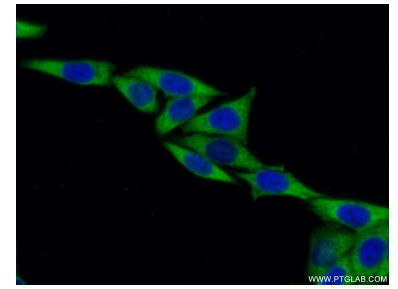
## Ausgewählte Validierungsdaten



Various lysates were subjected to SDS PAGE followed by western blot with 60329-1-Ig (EEF1B2 antibody) at dilution of 1:5000 incubated at room temperature for 1.5 hours.



WB result of EEF1B2 antibody (60329-1-Ig; 1:1000; incubated at room temperature for 1.5 hours) with sh-Control and sh-EEF1B2 transfected HeLa cells.



Immunofluorescent analysis of (-20°C Ethanol ) fixed HeLa cells using 60329-1-Ig(EEF1B2 antibody) at dilution of 1:100 and Alexa Fluor 488-conjugated AffiniPure Goat Anti-Mouse IgG(H+L).