

Nur für Forschungszwecke

Vimentin Monoklonaler Antikörper

Katalog-Nr.:60330-1-Ig

Vorgestelltes Produkt

161 Publikationen



Allgemeine Informationen

Katalog-Nr.: 60330-1-Ig	GenBank-Zugangsnummer: BC000163	Reinigungsmethode: Protein-A-Reinigung
Größe: 150ul, Konzentration: 1000 µg/ml von7431 Nanodrop;	GeneID (NCBI): vimentin	CloneNo.: 3H9D1
Wirt: Maus	Vollständiger Name: vimentin	Empfohlene Verdünnungen: WB 1:20000-1:100000 IHC 1:4000-1:16000 IF 1:500-1:2000
Isotyp: IgG1	Berechnete Masse: 466 aa, 54 kDa	
Immunogen Katalognummer: AG0489	Beobachtete Masse: 55-60 kDa	

Anwendungen

Geprüfte Anwendungen:

FC, IF, IHC, WB, ELISA

In Publikationen genannte Anwendungen:

FC, IF, IHC, IP, WB

Getestete Reaktivität:

Human, Maus, Ratte

Zitierte Arten:

Human, Maus, Ratte, Zebrafisch

Hinweis-IHC: Antigendemaskierung mit TE-Puffer pH 9,0 empfohlen. (*) Wahlweise kann die Antigendemaskierung auch mit Citratpuffer pH 6,0 erfolgen.

Positivkontrollen:

WB : HeLa-Zellen, A549-Zellen, Jurkat-Zellen, NIH/3T3-Zellen, ROS1728-Zellen, U-251-Zellen, U2OS-Zellen

IHC : humanes Appendizitis-Gewebe, humanes Endometriumkarzinomgewebe, humanes Kolongewebe, humanes Leberkarzinomgewebe, humanes Mammakarzinomgewebe, humanes Nierenzellkarzinomgewebe, humanes Ovarialkarzinomgewebe, humanes Pankreasgewebe, humanes Tonsillitisgewebe

IF : HUVEC-Zellen, HepG2-Zellen

Hintergrundinformationen

Vimentin, also named as VIM, belongs to the intermediate filament family. Vimentin is class-III intermediate filaments found in various non-epithelial cells, especially mesenchymal cells. Vimentin is important for stabilizing the architecture of the cytoplasm. Monocyte-derived macrophages secrete vimentin into the extracellular space in vitro. Secretion of vimentin was enhanced by the proinflammatory cytokine tumor necrosis factor-alpha (TNFA; 191160) and inhibited by the antiinflammatory cytokine IL10 (124092), suggesting that vimentin is involved in the immune response. Vimentin has specialized functions that contribute to specific dynamic cellular processes. As a phosphoprotein, 55-60 kDa of vimentin proteins can be observed due to the different phosphorylation level.

Bemerkenswerte Veröffentlichungen

Verfasser	Pubmed ID	Journal	Anwendung
Wenjing Guo	33117682	Front Oncol	WB
Jianmin Li	32989231	Lab Invest	WB
Bingyu Xie	36179941	Mol Cell Endocrinol	WB,IF

Lagerung

Lagerungsbedingungen:

Bei -20°C lagern. Nach dem Versand ein Jahr lang stabil

Lagerungspuffer:

PBS mit 0.02% Natriumazid und 50% Glycerin pH 7.3.

Aliquotieren ist nicht notwendig bei -20°C Lagerung

*** 20ul-Größen enthalten 0.1% BSA

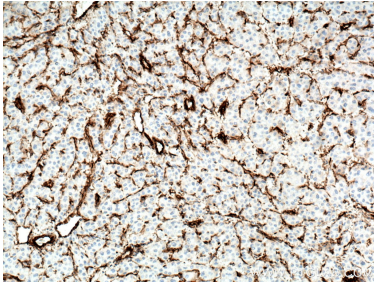
For technical support and original validation data for this product please contact:

T: 1 (888) 4PTGLAB (1-888-478-4522) (toll free in USA), or 1(312) 455-8498 (outside USA)

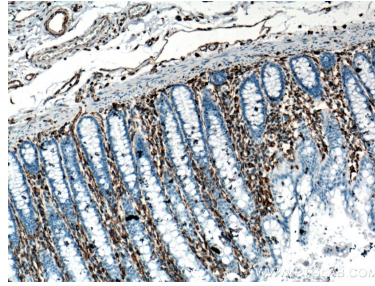
E: proteintech@ptglab.com
W: ptglab.com

This product is exclusively available under Proteintech Group brand and is not available to purchase from any other manufacturer.

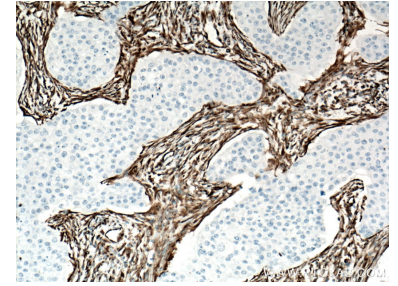
Ausgewählte Validierungsdaten



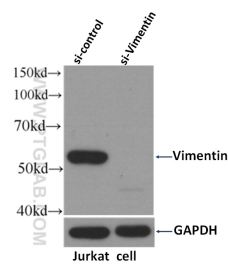
Immunohistochemical analysis of paraffin-embedded human liver cancer tissue slide using 60330-1-Ig (Vimentin antibody) at dilution of 1:6400 (under 10x lens. Heat mediated antigen retrieval with Tris-EDTA buffer (pH 9.0).



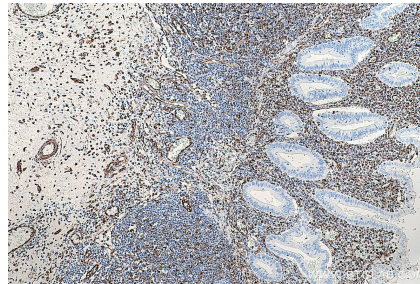
Immunohistochemical analysis of paraffin-embedded human colon tissue slide using 60330-1-Ig (Vimentin antibody) at dilution of 1:102400 (under 10x lens. Heat mediated antigen retrieval with Tris-EDTA buffer (pH 9.0).



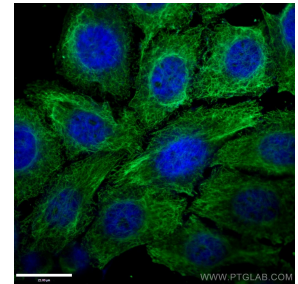
Immunohistochemical analysis of paraffin-embedded human breast cancer tissue slide using 60330-1-Ig (Vimentin antibody) at dilution of 1:8000 (under 10x lens. Heat mediated antigen retrieval with Tris-EDTA buffer (pH 9.0).



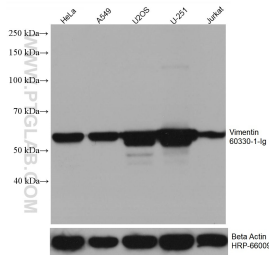
WB result of Vimentin antibody (60330-1-Ig, 1:4000) with si-Control and si-Vimentin transfected Jurkat cells.



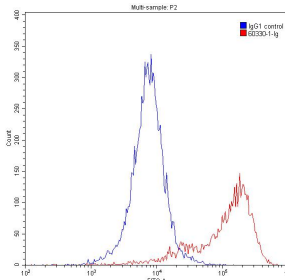
Immunohistochemical analysis of paraffin-embedded human appendicitis tissue slide using 60330-1-Ig (Vimentin antibody) at dilution of 1:8000 (under 10x lens). Heat mediated antigen retrieval with Tris-EDTA buffer (pH 9.0).



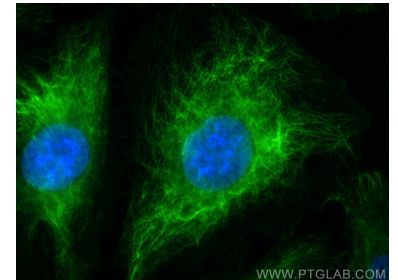
Immunofluorescent analysis of (-20°C Ethanol) fixed HepG2 cells using 60330-1-Ig (Vimentin antibody) at dilution of 1:100 and Alexa Fluor 488-Conjugated AffiniPure Goat Anti-Mouse IgG(H+L).



Various lysates were subjected to SDS PAGE followed by western blot with 60330-1-Ig (Vimentin antibody) at dilution of 1:50000 incubated at room temperature for 1.5 hours. The membrane was stripped and reblotted with HRP-conjugated Beta Actin Monoclonal antibody (HRP-66009) as loading control.



1×10^6 Jurkat cells were stained with 0.2 ug Anti-Human Vimentin (60330-1-Ig, Clone:3H9D1) and CoraLite488-Conjugated AffiniPure Goat Anti-Mouse IgG(H+L) at dilution 1:1500 (red), or stained with 0.2 ug isotype control and CoraLite488-Conjugated AffiniPure Goat Anti-Mouse IgG(H+L) at dilution 1:1500 (blue). Cells were fixed with 90% MeOH.



Immunofluorescent analysis of (-20°C Methanol) fixed HUVEC cells using Vimentin antibody (60330-1-Ig, Clone: 3H9D1) at dilution of 1:1000 and CoraLite@488-Conjugated AffiniPure Goat Anti-Mouse IgG(H+L).