

Allgemeine Informationen

Katalog-Nr.: 60335-1-Ig	GenBank-Zugangsnummer: BC141838	Reinigungsmethode: Protein-A-Reinigung
Größe: 150ul, Konzentration: 1700 µg/ml von 999 Nanodrop und 1000 µg/ml durch die Bradford-Methode mit BSA als Standard;	GeneID (NCBI): cadherin 1, type 1, E-cadherin (epithelial)	CloneNo.: 6B11F11
Wirt: Maus	Vollständiger Name: cadherin 1, type 1, E-cadherin (epithelial)	Empfohlene Verdünnungen: WB 1:2000-1:8000 IHC 1:1000-1:4000 IF 1:200-1:800
Isotyp: IgG2b	Berechnete Masse: 882 aa, 97 kDa	
Immunogen Katalognummer: AG15085	Beobachtete Masse: 120 kDa	

Anwendungen

Geprüfte Anwendungen:

FC, IF, IHC, WB, ELISA

In Publikationen genannte Anwendungen:

FC, IF, IHC, WB

Getestete Reaktivität:

Hausschwein, Human, Ratte

Zitierte Arten:

Affe, Hausschwein, Human, Ratte

Hinweis-IHC: Antigendemaskierung mit TE-Puffer pH 9,0 empfohlen. (*) Wahlweise kann die Antigendemaskierung auch mit Citratpuffer pH 6,0 erfolgen.

Positivkontrollen:

WB: PC-3-Zellen, A431-Zellen, Hausschwein-Hirngewebe, MCF-7-Zellen, MKN-45-Zellen, SGC-7901-Zellen

IHC: humanes Mammakarzinomgewebe, humanes Kolongewebe, Ratten-Kolongewebe

IF: humanes Mammakarzinomgewebe, humanes Nierengewebe

Hintergrundinformationen

Cadherins are a family of transmembrane glycoproteins that mediate calcium-dependent cell-cell adhesion and play an important role in the maintenance of normal tissue architecture. E-cadherin (epithelial cadherin), also known as CDH1 (cadherin 1) or CAM 120/80, is a classical member of the cadherin superfamily which also include N-, P-, R-, and B-cadherins. It has been regarded as a marker for spermatogonial stem cells in mice (PMID:23509752). E-cadherin is expressed on the cell surface in most epithelial tissues. The extracellular region of E-cadherin establishes calcium-dependent homophilic trans binding, providing specific interaction with adjacent cells, while the cytoplasmic domain is connected to the actin cytoskeleton through the interaction with p120-, α -, β -, and γ -catenin (plakoglobin). E-cadherin is important in the maintenance of the epithelial integrity, and is involved in mechanisms regulating proliferation, differentiation, and survival of epithelial cell. E-cadherin may also play a role in tumorigenesis. It is considered to be an invasion suppressor protein and its loss is an indicator of high tumor aggressiveness.

Bemerkenswerte Veröffentlichungen

Verfasser	Pubmed ID	Journal	Anwendung
Wenjing Guo	33117682	Front Oncol	WB
Hui-Fang Wang	28970011	Eur J Pharmacol	WB, IF
Wei Li	34603446	J Oncol	WB

Lagerung

Lagerungsbedingungen:

Bei -20°C lagern. Nach dem Versand ein Jahr lang stabil

Lagerungspuffer:

PBS mit 0.02% Natriumazid und 50% Glycerin pH 7.3.

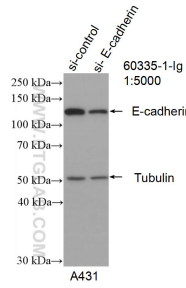
Aliquotieren ist nicht notwendig bei -20°C Lagerung

*** 20ul-Größen enthalten 0.1% BSA

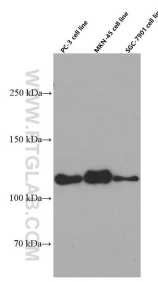
For technical support and original validation data for this product please contact:
 T: 1 (888) 4PTGLAB (1-888-478-4522) (toll free in USA), or 1(312) 455-8498 (outside USA)
 E: proteintech@ptglab.com
 W: ptglab.com

This product is exclusively available under Proteintech Group brand and is not available to purchase from any other manufacturer.

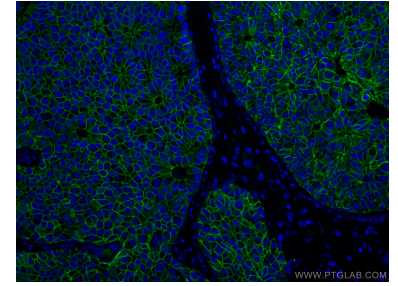
Ausgewählte Validierungsdaten



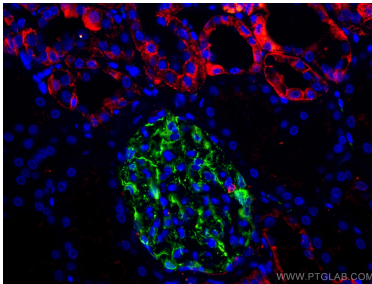
WB result of E-cadherin antibody (60335-1-Ig; 1:5000; incubated at room temperature for 1.5 hours) with sh-Control and sh-E-cadherin transfected A431 cells.



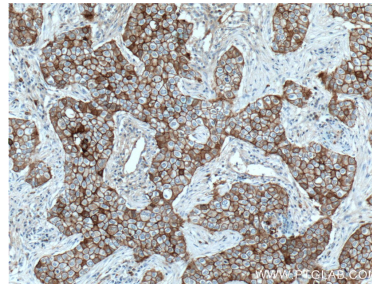
PC-3, MKN-45, SGC-7901 cells were subjected to SDS PAGE followed by western blot with 60335-1-Ig (E-cadherin Antibody) at dilution of 1:4000 incubated at room temperature for 1.5 hours.



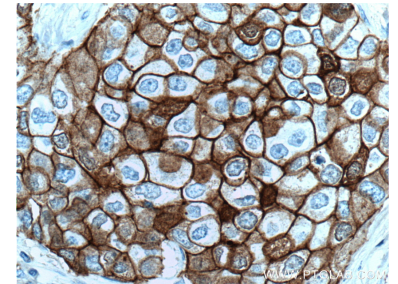
Immunofluorescent analysis of (4% PFA) fixed human breast cancer tissue using E-cadherin antibody (60335-1-Ig, Clone: 6B11F11) at dilution of 1:400 and CoraLite®488-Conjugated AffiniPure Goat Anti-Mouse IgG(H+L).



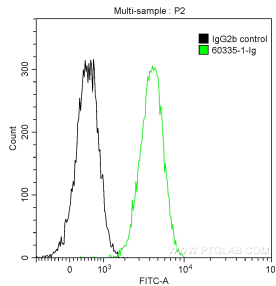
Immunofluorescent analysis of (4% PFA) fixed human kidney tissue using E-cadherin antibody (60335-1-Ig, Clone: 6B11F11) at dilution of 1:300 and CoraLite®594-Conjugated AffiniPure Goat Anti-Mouse IgG(H+L), (18150-1-AP, green). DNA was stained by DAPI (blue).



Immunohistochemical analysis of paraffin-embedded human breast cancer tissue slide using 60335-1-Ig (E-cadherin antibody) at dilution of 1:2000 (under 10x lens. Heat mediated antigen retrieval with Tris-EDTA buffer (pH 9.0).



Immunohistochemical analysis of paraffin-embedded human breast cancer tissue slide using 60335-1-Ig (E-cadherin antibody) at dilution of 1:2000 (under 40x lens. Heat mediated antigen retrieval with Tris-EDTA buffer (pH 9.0).



1×10^6 A431 cells were stained with 0.2 μ g Anti-Human E-cadherin (60335-1-Ig, Clone:6B11F11) and CoraLite®488-Conjugated AffiniPure Goat Anti-Mouse IgG(H+L) at dilution 1:1000 (green), or stained with 0.2 μ g isotype control antibody and CoraLite®488-Conjugated AffiniPure Goat Anti-Mouse IgG(H+L) at dilution 1:1000 (black). Cells were fixed with 90% MeOH.