

## Allgemeine Informationen

<b>Katalog-Nr.:</b> 60355-1-Ig	<b>GenBank-Zugangsnummer:</b> BC020843	<b>Reinigungsmethode:</b> Protein-A-Reinigung
<b>Größe:</b> 150ul , Konzentration: 1491 µg/ml von84868 Nanodrop und 1000 µg/ml durch die Bradford-Methode mit BSA als Standard;	<b>GeneID (NCBI):</b> hepatitis A virus cellular receptor 2	<b>CloneNo.:</b> 4C4G3
<b>Wirt:</b> Maus	<b>Berechnete Masse:</b> 301 aa, 33 kDa	<b>Empfohlene Verdünnungen:</b> WB 1:1000-1:10000
<b>Isotyp:</b> IgG1	<b>Beobachtete Masse:</b> 33 kDa, 50-70 kDa	
<b>Immunogen Katalognummer:</b> AG16901		

## Anwendungen

<b>Geprüfte Anwendungen:</b> FC, WB, ELISA	<b>Positivkontrollen:</b> WB : Daudi-Zellen, Hausschwein-Thymusgewebe, humanes Herzgewebe, Jurkat-Zellen, PC-3-Zellen, Rattenherzgewebe, RAW 264.7-Zellen, ROS1728- Zellen
<b>In Publikationen genannte Anwendungen:</b> WB	
<b>Getestete Reaktivität:</b> Hausschwein, Human, Maus, Ratte	
<b>Zitierte Arten:</b> Hausschwein, Human, Maus	

## Hintergrundinformationen

TIM3, also known as HAVCR2, is a member of the recently discovered T cell Ig and mucin domain-containing molecule superfamily. TIM3 is a negative regulatory molecule that is important for T cell tolerance and has a crucial role in autoimmunity and T cell exhaustion during chronic viral infection (PMID: 23180819). TIM3 is expressed by T-helper type 1 (Th1) cells, macrophage, monocyte, dendritic cells, CD8+ T cell and other lymphocyte subsets. Galectin-9 is a ligand for TIM3. TIM3-galectin-9 pathway negatively regulates T helper type 1 immunity (PMID: 16286920). TIM3 is a 280-aa membrane protein with a calculated molecular weight of 33 kDa, the higher molecular weights between 50 and 70 kDa detected by this monoclonal antibody probably represent glycosylated TIM3 (PMID: 20107545; 17069754; 11725301).

## Bemerkenswerte Veröffentlichungen

Verfasser	Pubmed ID	Journal	Anwendung
Qing Guo	36325060	iScience	WB,IHC,IF
Fan Wu	32418210	J Pathol	IHC
Inés Ruedas-Torres	34046040	Front Immunol	IHC

## Lagerung

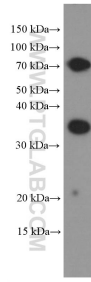
**Lagerungsbedingungen:**  
Bei -20°C lagern. Nach dem Versand ein Jahr lang stabil  
**Lagerungspuffer:**  
PBS mit 0.02% Natriumazid und 50% Glycerin pH 7.3.  
Aliquotieren ist nicht notwendig bei -20°C Lagerung

**\*\*\* 20ul-Größen enthalten 0.1% BSA**

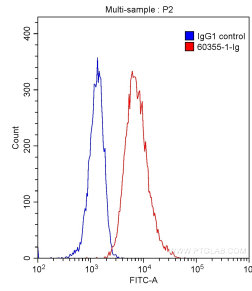
For technical support and original validation data for this product please contact:  
T: 1 (888) 4PTGLAB (1-888-478-4522) (toll free in USA), or 1(312) 455-8498 (outside USA)  
E: [proteintech@ptglab.com](mailto:proteintech@ptglab.com)  
W: [ptglab.com](http://ptglab.com)

**This product is exclusively available under Proteintech Group brand and is not available to purchase from any other manufacturer.**

## Ausgewählte Validierungsdaten



Daudi cells were subjected to SDS PAGE followed by western blot with 60355-1-Ig (TIM3 Antibody) at dilution of 1:2000 incubated at room temperature for 1.5 hours.



$1 \times 10^6$  Daudi cells were stained with 0.20  $\mu$ g Anti-Human TIM3 (60355-1-Ig, Clone: 4C4G3) (red) or 0.20  $\mu$ g isotype control antibody (blue) and CoraLite<sup>®</sup>488-Conjugated AffiniPure Goat Anti-Mouse IgG(H+L) with dilution 1:1000. Cells were fixed with 90% MeOH.