

Nur für Forschungszwecke

CD103 Monoklonaler Antikörper

Katalog-Nr.: 65047-1-Ig **1 Publikationen**



Allgemeine Informationen

Katalog-Nr.: 65047-1-Ig	GenBank-Zugangsnummer: BC150690	Reinigungsmethode: Affinitätsreinigung
Größe: 100ug, 0.5 mg/ml	GeneID (NCBI): 16407	CloneNo.: 2E7
Wirt: hamster	Vollständiger Name: integrin alpha E, epithelial-associated	
Isotyp: IgG		

Anwendungen

Geprüfte Anwendungen:
FC

In Publikationen genannte Anwendungen:
IF

Getestete Reaktivität:
Maus

Zitierte Arten:
Maus

Hintergrundinformationen

CD103, also known as integrin alpha-E (ITGAE) or integrin alpha-IEL, is a type I transmembrane integrin protein that binds integrin beta 7 to form Integrin alpha-E beta-7 which is a receptor for E-cadherin and mediates adhesion of T lymphocytes to epithelial cells (PMID: 7969453; 8468482). CD103 is expressed on intraepithelial lymphocyte (IEL) T cells (both alpha/beta T cells and gamma/delta T cells), some peripheral regulatory T cells (Tregs), lamina propria T cells, and a subset of dendritic cells in the gut mucosa and mesenteric lymph nodes (PMID: 12242333; 15608520; 16216890).

Bemerkenswerte Veröffentlichungen

Verfasser	Pubmed ID	Journal	Anwendung
Giovanni Sarnelli	36979504	Biomolecules	IF

Lagerung

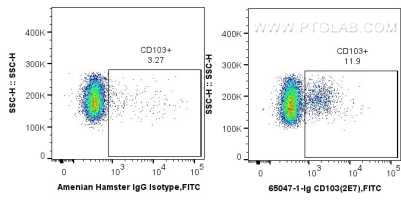
Lagerungsbedingungen:
Store at 2-8°C. Stable for one year after shipment.

Lagerungspuffer:
PBS with 0.09% sodium azide.

For technical support and original validation data for this product please contact:
T: 1 (888) 4PTGLAB (1-888-478-4522) (toll free in USA), or 1(312) 455-8498 (outside USA)
E: proteintech@ptglab.com
W: ptglab.com

This product is exclusively available under Proteintech Group brand and is not available to purchase from any other manufacturer.

Ausgewählte Validierungsdaten



1×10^6 C57BL/6 mouse splenocytes were surface stained with 0.5 μ g Anti-Mouse CD103 (65047-1-Ig, Clone: 2E7) and FITC Goat anti-hamster (Armenian) IgG Antibody at dilution 1:100, or 0.5 μ g Control Antibody and FITC Goat anti-hamster (Armenian) IgG Antibody at dilution 1:100. Cells were not fixed.