

Nur für Forschungszwecke

# CD105 Monoklonaler Antikörper

Katalog-Nr.: 65048-1-Ig



## Allgemeine Informationen

Katalog-Nr.:

65048-1-Ig

Größe:

500ug, 0.5 mg/ml

Wirt:

Ratte

Isotyp:

IgG2a, kappa

GenBank-Zugangsnummer:

BC029080

GeneID (NCBI):

13805

Vollständiger Name:

endoglin

Reinigungsmethode:

Affinitätsreinigung

CloneNo.:

MJ7/18

Empfohlene Verdünnungen:

IF 1:200-1:800

## Anwendungen

Geprüfte Anwendungen:

FC, IF

Getestete Reaktivität:

Maus

Positivkontrollen:

IF : Mauslebergewebe,

## Hintergrundinformationen

Endoglin (ENG, CD105) is a homodimeric cell membrane glycoprotein of 180 kDa, composed of disulphide-linked subunits of 90-95 kDa. Endoglin is a proliferation-associated and hypoxia-inducible protein mainly expressed on vascular endothelial cells. It acts as an accessory receptor for transforming growth factor beta (TGF- $\beta$ ) and is involved in vascular development and remodelling. The important role of Endoglin in angiogenesis and in tumor progression makes it an ideal target for antiangiogenic therapy and a good marker for tumor prognosis. (PMID: 1326540; 14528280; 21737653; 12773481)

## Lagerung

Lagerungsbedingungen:

Store at 2-8°C. Stable for one year after shipment.

Lagerungspuffer:

Borat-gepufferte Kochsalzlösung, pH 8,2.

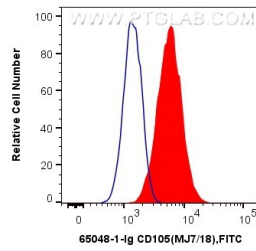
For technical support and original validation data for this product please contact:

T: 1 (888) 4PTGLAB (1-888-478-4522) (toll free in USA), or 1(312) 455-8498 (outside USA)

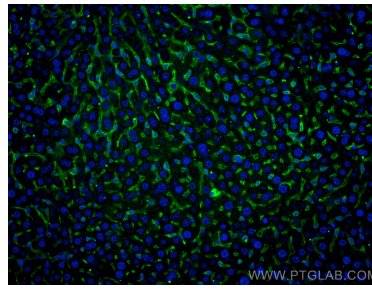
E: [proteintech@ptglab.com](mailto:proteintech@ptglab.com)  
W: [ptglab.com](http://ptglab.com)

This product is exclusively available under Proteintech Group brand and is not available to purchase from any other manufacturer.

## Ausgewählte Validierungsdaten



$1 \times 10^6$  bEnd.3 cells were surface stained with 0.25  $\mu$ g Anti-Mouse CD105 (65048-1-Ig, Clone: MJ7/18) and FITC anti-rat IgG2a Antibody at dilution 1:100 (red), or 0.25  $\mu$ g Control Antibody. Cells were not fixed.



Immunofluorescent analysis of (4% PFA) fixed mouse liver tissue using CD105 antibody (65048-1-Ig, Clone: MJ7/18) at dilution of 1:400 and CoraLite<sup>®</sup>488-Conjugated AffiniPure Goat Anti-Mouse IgG(H+L).