

Nur für Forschungszwecke

CD107a / LAMP1 Monoklonaler Antikörper



Katalog-Nr.: 65051-1-Ig **2 Publikationen**

Allgemeine Informationen

Katalog-Nr.: 65051-1-Ig	GenBank-Zugangsnummer: BC006345	Reinigungsmethode: Protein-G-Reinigung
Größe: 100ug, 0.5 mg/ml	GeneID (NCBI): 3916	CloneNo.: H4A3
Wirt: Maus	Vollständiger Name: lysosomal-associated membrane protein 1	Empfohlene Verdünnungen: IF 1:50-1:500
Isotyp: IgG1, kappa		

Anwendungen

Geprüfte Anwendungen: FC, IF	Positivkontrollen: IF : HeLa-Zellen,
In Publikationen genannte Anwendungen: IF, WB	
Getestete Reaktivität: Human	
Zitierte Arten: Affe, Human	

Hintergrundinformationen

LAMP1 (CD107a) is a heavily glycosylated membrane protein enriched in the lysosomal membrane. LAMP1 is extensively glycosylated with asparagine-linked oligosaccharides which protect it from intracellular proteolysis (PMID: 10521503). Although LAMP1 is expressed largely in the endosome-lysosomal membrane of cells, it is also found on the plasma membrane (PMID: 16168398). Elevated LAMP1 expression at the cell surface has also been detected during platelet and granulocytic cell activation, as well as in some tumor cells (PMID: 29085473). LAMP1 functions to provide selectins with carbohydrate ligands. This protein has also been shown to be a marker of degranulation on lymphocytes such as CD8+ and NK cells and may also play a role in tumor cell differentiation and metastasis (PMID: 18835598; 29085473; 9426697).

Bemerkenswerte Veröffentlichungen

Verfasser	Pubmed ID	Journal	Anwendung
Jia-min Yan	34747299	Autophagy	WB,IF
Zhaozhong Liao	36078115	Cells	IF

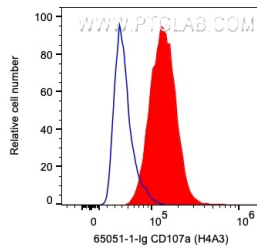
Lagerung

Lagerungsbedingungen:
Store at 2-8°C. Stable for one year after shipment.
Lagerungspuffer:
PBS with 0.09% sodium azide.

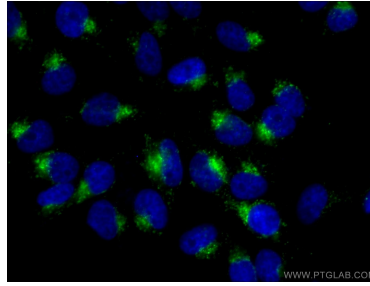
For technical support and original validation data for this product please contact:
T: 1 (888) 4PTGLAB (1-888-478-4522) (toll free in USA), or 1(312) 455-8498 (outside USA)
E: proteintech@ptglab.com
W: ptglab.com

This product is exclusively available under Proteintech Group brand and is not available to purchase from any other manufacturer.

Ausgewählte Validierungsdaten



1X10⁶ HeLa cells were intracellularly stained with 0.2 µg Anti-Human CD107a / LAMP1 (65051-1-Ig, Clone:H4A3) and CoraLite® 594-Conjugated AffiniPure Goat Anti-Mouse IgG(H+L) at dilution 1:1000. Cells were fixed with 4% PFA and permeabilized with Flow Cytometry Perm Buffer (PF00011-C).



Immunofluorescent analysis of (4% PFA) fixed HeLa cells using 65051-1-Ig (CD107a antibody) at dilution of 1:100 and CoraLite488-Conjugated AffiniPure Goat Anti-Mouse IgG(H+L).