

Nur für Forschungszwecke

# CD11b Monoklonaler Antikörper

Katalog-Nr.: 65055-1-Ig **1 Publikationen**



## Allgemeine Informationen

<b>Katalog-Nr.:</b> 65055-1-Ig	<b>GenBank-Zugangsnummer:</b> BC156991	<b>Reinigungsmethode:</b> Affinitätsreinigung
<b>Größe:</b> 500ug, 0.5 mg/ml	<b>GeneID (NCBI):</b> 16409	<b>CloneNo.:</b> M1/70
<b>Wirt:</b> Ratte	<b>Vollständiger Name:</b> integrin alpha M	
<b>Isotyp:</b> IgG2b, kappa		

## Anwendungen

**Geprüfte Anwendungen:**  
FC

**In Publikationen genannte Anwendungen:**  
FC

**Getestete Reaktivität:**  
Human, Maus

**Zitierte Arten:**  
Maus

## Hintergrundinformationen

Integrins are cell adhesion receptors that are heterodimers composed of non-covalently associated  $\alpha$  and  $\beta$  subunits (PMID: 9779984). CD11b, also known as Integrin alpha M or CR3A, belongs to the integrin alpha chain family. CD11b forms an  $\alpha/\beta$  heterodimer with CD18 (integrin  $\beta$ 2). CD11b/CD18 is implicated in various adhesive interactions of monocytes, macrophages and granulocytes as well as in mediating the uptake of complement-coated particles and pathogens (PMID: 9558116; 20008295). CD11b/CD18 is a receptor for the complement protein fragment iC3b, and is also a receptor for fibrinogen, factor X and ICAM1 (PMID: 2971974; 15485828).

## Bemerkenswerte Veröffentlichungen

Verfasser	Pubmed ID	Journal	Anwendung
Wenxuan Xu	36134371	Nanoscale Adv	FC

## Lagerung

**Lagerungsbedingungen:**  
Store at 2-8°C. Stable for one year after shipment.

**Lagerungspuffer:**  
Borat-gepufferte Kochsalzlösung, pH 8,2.

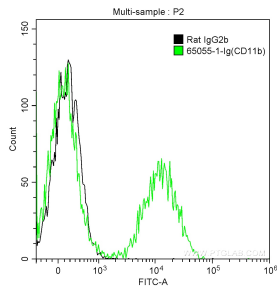
For technical support and original validation data for this product please contact:

T: 1 (888) 4PTGLAB (1-888-478-4522) (toll free in USA), or 1(312) 455-8498 (outside USA)

E: [proteintech@ptglab.com](mailto:proteintech@ptglab.com)  
W: [ptglab.com](http://ptglab.com)

**This product is exclusively available under Proteintech Group brand and is not available to purchase from any other manufacturer.**

## Ausgewählte Validierungsdaten



1X10<sup>6</sup> mouse bone marrow cells were surface stained with 0.5 ug Anti-Mouse CD11b (65055-1-Ig, Clone: M1/70) and FITC Anti-Rat IgG2b Antibody at dilution 1:200 (green), or stained with 0.5 ug Rat IgG2b Isotype Control and FITC Anti-Rat IgG2b Antibody at dilution 1:200 (black). Cells were not fixed.