

Nur für Forschungszwecke

CD16 / CD32 Monoklonaler Antikörper

Katalog-Nr.: 65080-1-Ig



Allgemeine Informationen

Katalog-Nr.: 65080-1-Ig	GenBank-Zugangsnummer: BC038070	Reinigungsmethode: Affinitätsreinigung
Größe: 100ug, 0.5 mg/ml	GeneID (NCBI): 14130	CloneNo.: 2.4G2
Wirt: Ratte	Vollständiger Name: Fc receptor, IgG, low affinity IIb	
Isotyp: IgG2b		

Anwendungen

Geprüfte Anwendungen:
FC

Getestete Reaktivität:
Maus

Hintergrundinformationen

CD16 (F_cRIII) is a 50-70 kDa low affinity Fc receptor found on the surface of natural killer cells, neutrophil polymorphonuclear leukocytes, monocytes and macrophages. CD16 mediates antibody-dependent cellular cytotoxicity (ADCC) and other antibody-dependent responses, such as phagocytosis. CD32 (F_cRII) is a 40 kD transmembrane glycoprotein that binds to the Fc region of IgG with low affinity. CD32 is present on phagocytic cells such as macrophages and neutrophils, and is involved in the process of phagocytosis and clearing of immune complexes. The 2.4G2 antibody reacts with the extracellular domains of mouse CD16 (FcRIII) and CD32 (FcRII) (PMID: 90108; 8406898). Rat anti mouse CD16/CD32 antibody, clone 2.4G2 is specific to the common epitope of CD16 and CD32. It can be used for blocking non-specific binding of immunoglobulins to the Fc receptors.

Lagerung

Lagerungsbedingungen:
Bei 2-8°C lagern.

Lagerungspuffer:
Phosphatbasierter Puffer mit 0,09% Natriumazid, pH 7,2.

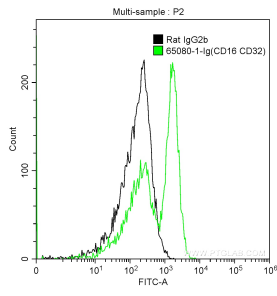
For technical support and original validation data for this product please contact:

T: 1 (888) 4PTGLAB (1-888-478-4522) (toll free in USA), or 1(312) 455-8498 (outside USA)

E: proteintech@ptglab.com
W: ptglab.com

This product is exclusively available under Proteintech Group brand and is not available to purchase from any other manufacturer.

Ausgewählte Validierungsdaten



1X10⁶ mouse splenocytes were surface stained with 0.5 ug Anti-Mouse CD16 / CD32 (65080-1-Ig, Clone: 2.4G2) and FITC Anti-Rat IgG2b Antibody at dilution 1:200 (green), or stained with 0.5 ug Rat IgG2b Isotype Control and FITC Anti-Rat IgG2b Antibody at dilution 1:200 (black). Cells were not fixed.