

Nur für Forschungszwecke

# PD-L1 (B7-H1) Monoklonaler Antikörper

Katalog-Nr.: 65081-1-Ig



## Allgemeine Informationen

Katalog-Nr.:

65081-1-Ig

Größe:

100ug, 0.5 mg/ml

Wirt:

Maus

Isotyp:

IgG2b

GenBank-Zugangsnummer:

BC069381

GeneID (NCBI):

29126

Vollständiger Name:

CD274 molecule

Reinigungsmethode:

Affinitätsreinigung

CloneNo.:

29E.2A3

## Anwendungen

Geprüfte Anwendungen:

FC

Getestete Reaktivität:

Human

## Hintergrundinformationen

Programmed cell death ligand 1 (PD-L1, CD274, or B7-H1), is the first member of B7 family to be discovered. B7 family molecules are type I transmembrane proteins belonging to the immunoglobulin superfamily. In concert with their CD28 family receptors, the B7s are key regulators of the adaptive immune response. PD-L1 is suggested as a negative regulator of T and B cell, and plays important role in mediating tolerance of lymphocytes to self-antigens. It is also involved in the costimulatory signal, essential for T-cell proliferation and production of IL10 and IFNG, in an IL2-dependent and a PD-1-independent manner.

## Lagerung

Lagerungsbedingungen:

Bei 2-8°C lagern.

Lagerungspuffer:

Phosphatbasierter Puffer mit 0,09% Natriumazid, pH 7,2.

For technical support and original validation data for this product please contact:

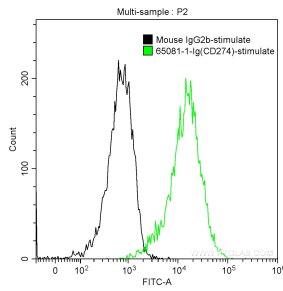
T: 1 (888) 4PTGLAB (1-888-478-4522) (toll free in USA), or 1(312) 455-8498 (outside USA)

E: [proteintech@ptglab.com](mailto:proteintech@ptglab.com)

W: [ptglab.com](http://ptglab.com)

This product is exclusively available under Proteintech Group brand and is not available to purchase from any other manufacturer.

## Ausgewählte Validierungsdaten



1X10<sup>6</sup> PHA-stimulated (5 ug/ml, 3 days) human peripheral blood lymphocytes were surface stained with 0.25 ug Anti-Human PD-L1 (B7-H1) (65081-1-Ig, Clone: 29E.2A3) and CoraLite®488-Conjugated AffiniPure Goat Anti-Mouse IgG(H+L) at dilution 1:1000 (green), or stained with 0.25 ug mouse IgG2b isotype control and CoraLite®488-Conjugated AffiniPure Goat Anti-Mouse IgG(H+L) at dilution 1:1000 (black). Cells were not fixed.