

Nur für Forschungszwecke

CD80 (B7-1) Monoklonaler Antikörper

Katalog-Nr.:65083-1-Ig



Allgemeine Informationen

Katalog-Nr.: 65083-1-Ig	GenBank-Zugangsnummer: BC042665	Reinigungsmethode: Affinitätsreinigung
Größe: 100ug, 500 µg/ml	GeneID (NCBI): 941	CloneNo.: 2D10.4
Wirt: Maus	Vollständiger Name: CD80 molecule	
Isotyp: IgG1, kappa	Berechnete Masse: 33 kDa	

Anwendungen

Geprüfte Anwendungen:
FC

Getestete Reaktivität:
Human

Hintergrundinformationen

CD80 (also known as B7-1) is a type I membrane protein that is a member of the immunoglobulin superfamily, with an extracellular immunoglobulin constant-like domain and a variable-like domain required for receptor binding. It is expressed on antigen-presenting cells (APCs), including B cells, dendritic cells, monocytes, and macrophages. CD80 is the receptor for the proteins CD28 and CTLA-4 found on the surface of T-cells. It is involved in the costimulatory signal essential for T-lymphocyte activation. T-cell proliferation and cytokine production is induced by the binding of CD28, binding to CTLA-4 has opposite effects and inhibits T-cell activation. CD80 also acts as a cellular attachment receptor for adenovirus subgroup B. (PMID: 7545666; 12015893; 16920215)

Lagerung

Lagerungsbedingungen:
Store at 2-8°C. Stable for one year after shipment.

Lagerungspuffer:
PBS mit 0,1% Natriumazid, pH 7,3.

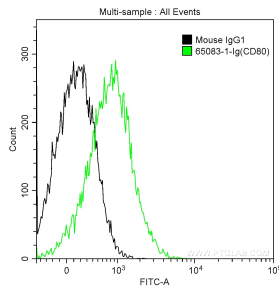
For technical support and original validation data for this product please contact:

T: 1 (888) 4PTGLAB (1-888-478-4522) (toll free in USA), or 1(312) 455-8498 (outside USA)

E: proteintech@ptglab.com
W: ptglab.com

This product is exclusively available under Proteintech Group brand and is not available to purchase from any other manufacturer.

Ausgewählte Validierungsdaten



1X10⁶ Daudi cells were surface stained with 0.25 ug Anti-Human CD80 (B7-1) (65083-1-Ig, Clone: 2D10.4) and CoraLite®488-Conjugated AffiniPure Goat Anti-Mouse IgG(H+L) at dilution 1:1000 (green), or stained with 0.25 ug isotype control and CoraLite®488-Conjugated AffiniPure Goat Anti-Mouse IgG(H+L) at dilution 1:1000 (black). Cells were not fixed.