

Nur für Forschungszwecke

KLRG1 Monoklonaler Antikörper

Katalog-Nr.:65084-1-Ig



Allgemeine Informationen

Katalog-Nr.:

65084-1-Ig

Größe:

100ug, 0.5 mg/ml

Wirt:

Golden Syrian Hamster

Isotyp:

IgG

GenBank-Zugangsnummer:

BC101953

GeneID (NCBI):

50928

Vollständiger Name:

killer cell lectin-like receptor

subfamily G, member 1

Reinigungsmethode:

Affinitätsreinigung

CloneNo.:

2F1

Anwendungen

Geprüfte Anwendungen:

FC

Getestete Reaktivität:

Maus

Hintergrundinformationen

KLRG1 (killer cell lectin-like receptor subfamily G, member 1) is a C-type lectin inhibitory receptor that contains an immunoreceptor tyrosine-based inhibitory motif (ITIM) in its cytoplasmic domain. KLRG1 is expressed by subsets of NK and T cells, existing both as a monomer and as a disulfide-linked homodimer (PMID: 10741410; 19604491). It is considered to be a cell differentiation marker for NK and T cells and is strongly induced by viral and other infections (PMID: 20373518). Through interactions with members of the cadherin family, KLRG1 plays an inhibitory role on NK- and T-cell function (PMID: 19009530; 20373518).

Lagerung

Lagerungsbedingungen:

Bei 2-8°C lagern.

Lagerungspuffer:

Phosphatbasierter Puffer mit 0,09% Natriumazid, pH 7,2.

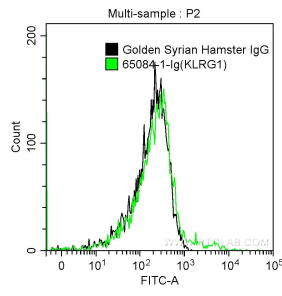
For technical support and original validation data for this product please contact:

T: 1 (888) 4PTGLAB (1-888-478-4522) (toll free
in USA), or 1(312) 455-8498 (outside USA)

E: proteintech@ptglab.com
W: ptglab.com

This product is exclusively available under Proteintech Group brand and is not available to purchase from any other manufacturer.

Ausgewählte Validierungsdaten



1X10⁶ mouse splenocytes were surface stained with 0.5 μ g Anti-Mouse KLRG1 (65084-1-Ig, Clone: 2F1) and FITC anti-Golden Syrian Hamster IgG Antibody at dilution 1:50 (green), or stained with 0.5 μ g Golden Syrian Hamster IgG isotype control and FITC anti-Golden Syrian Hamster IgG Antibody at dilution 1:50 (black). Cells were not fixed.