

Nur für Forschungszwecke

CD20 Monoklonaler Antikörper

Katalog-Nr.:65085-1-Ig



Allgemeine Informationen

Katalog-Nr.: 65085-1-Ig	GenBank-Zugangsnummer: BC002807	Reinigungsmethode: Affinitätsreinigung
Größe: 100ug, 500 µg/ml	GeneID (NCBI): 931	CloneNo.: 2H7
Wirt: Maus	Vollständiger Name: membrane-spanning 4-domains, subfamily A, member 1	
Isotyp: IgG2b, kappa	Berechnete Masse: 297 aa, 33 kDa	

Anwendungen

Geprüfte Anwendungen:
FC

Getestete Reaktivität:
Human

Hintergrundinformationen

CD20 is a 33-37 kDa transmembrane phosphoprotein belonging to the membrane-spanning 4A family (PMID: 3260267; 16785532). CD20 is a B-lymphocyte surface molecule that is widely expressed during B-cell ontogeny, from early pre-B-cell developmental stages until final differentiation into plasma cells (PMID: 7524522). CD20 functions as calcium-permeable cation channel (PMID: 7684739). It is involved in the regulation of B-cell activation, proliferation and differentiation (PMID: 7524522).

Lagerung

Lagerungsbedingungen:
Store at 2-8°C. Stable for one year after shipment.
Lagerungspuffer:
PBS with 0.09% sodium azide.

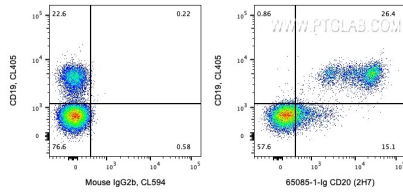
For technical support and original validation data for this product please contact:

T: 1 (888) 4PTGLAB (1-888-478-4522) (toll free
in USA), or 1(312) 455-8498 (outside USA)

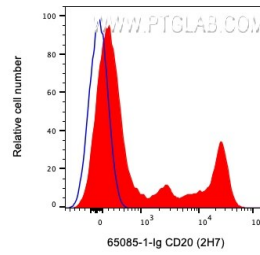
E: proteintech@ptglab.com
W: ptglab.com

This product is exclusively available under Proteintech Group brand and is not available to purchase from any other manufacturer.

Ausgewählte Validierungsdaten



1X10⁶ human PBMCs were surface co-stained with CL405 Anti-Human CD19 and 0.5 ug Anti-Human CD20 (65085-1-Ig, Clone: 2H7) and CoraLite®594-Conjugated AffiniPure Goat Anti-Mouse IgG(H+L) at dilution 1:1000 or Isotype Control. Cells were not fixed. Lymphocytes were gated.



1X10⁶ human PBMCs were surface stained with 0.5 ug Anti-Human CD73 (65162-1-Ig, Clone:AD2) and CoraLite®594-Conjugated AffiniPure Goat Anti-Mouse IgG(H+L) at dilution 1:1000 (red) or Isotype Control. Cells were not fixed. Lymphocytes were gated.