

Nur für Forschungszwecke

# CD11c Monoklonaler Antikörper

Katalog-Nr.: 65086-1-Ig



## Allgemeine Informationen

Katalog-Nr.:

65086-1-Ig

Größe:

100ug, 0.5 mg/ml

Wirt:

Maus

Isotyp:

IgG1

GenBank-Zugangsnummer:

BC038237

GeneID (NCBI):

3687

Vollständiger Name:

integrin, alpha X (complement component 3 receptor 4 subunit)

Berechnete Masse:

1169 aa, 129 kDa

Reinigungsmethode:

Affinitätsreinigung

CloneNo.:

3.9

## Anwendungen

Geprüfte Anwendungen:

FC

Getestete Reaktivität:

Human

## Hintergrundinformationen

Integrins are cell adhesion receptors that are heterodimers composed of non-covalently associated  $\alpha$  and  $\beta$  subunits (PMID: 9779984). CD11c, also known as integrin  $\alpha X$ , is a type I transmembrane glycoprotein present on a variety of cells, including monocytes/macrophages, granulocytes, a subset of B cells, NK cells and dendritic cells (PMID: 2897326; 1680915; 1694698; 17389580). As a result of its high level of expression on most dendritic cells, CD11c is typically considered to be a marker of conventional dendritic cells (PMID: 27119555). CD11c forms an  $\alpha/\beta$  heterodimer with CD18 (integrin  $\beta 2$ ). CD11c/CD18 acts a receptor for fibrinogen and is important in monocyte adhesion and chemotaxis (PMID: 1671533).

## Lagerung

Lagerungsbedingungen:

Bei 2-8°C lagern.

Lagerungspuffer:

Phosphatbasierter Puffer mit 0,09% Natriumazid, pH 7,2.

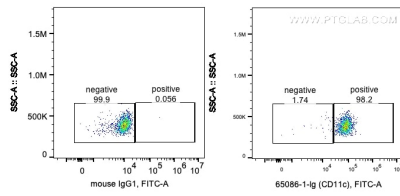
For technical support and original validation data for this product please contact:

T: 1 (888) 4PTGLAB (1-888-478-4522) (toll free in USA), or 1(312) 455-8498 (outside USA)

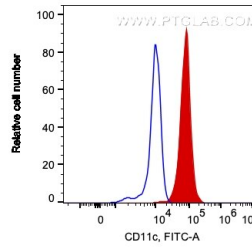
E: [proteintech@ptglab.com](mailto:proteintech@ptglab.com)  
W: [ptglab.com](http://ptglab.com)

This product is exclusively available under Proteintech Group brand and is not available to purchase from any other manufacturer.

## Ausgewählte Validierungsdaten



1X10<sup>6</sup> human PBMCs were surface stained with 0.2 ug Anti-Human CD11c (65086-1-Ig, Clone:3.9) and CoraLite®488-Conjugated AffiniPure Goat Anti-Mouse IgG(H+L) at dilution 1:1000 (red), or 0.2 ug Mouse IgG1 Isotype Control (66360-1-Ig, Clone: T1F8D3F10) and CoraLite®488-Conjugated AffiniPure Goat Anti-Mouse IgG(H+L) at dilution 1:1000 (blue). Cells were not fixed. Monocytes were gated.



1X10<sup>6</sup> human PBMCs were surface stained with 0.2 ug Anti-Human CD11c (65086-1-Ig, Clone:3.9) and CoraLite®488-Conjugated AffiniPure Goat Anti-Mouse IgG(H+L) at dilution 1:1000 (red), or 0.2 ug Mouse IgG1 Isotype Control (66360-1-Ig, Clone: T1F8D3F10) and CoraLite®488-Conjugated AffiniPure Goat Anti-Mouse IgG(H+L) at dilution 1:1000 (blue). Cells were not fixed. Monocytes were gated.