

Nur für Forschungszwecke

FceR1 Monoklonaler Antikörper

Katalog-Nr.:65091-1-Ig



Allgemeine Informationen

Katalog-Nr.: 65091-1-Ig	GenBank-Zugangsnummer: BC125455	Reinigungsmethode: Affinitätsreinigung
Größe: 100ug , 500 µg/ml	GeneID (NCBI): 14125	CloneNo.: MAR-1
Wirt: Armenian Hamster	Vollständiger Name: Fc receptor, IgE, high affinity I, alpha polypeptide	
Isotyp: Armenian Hamster IgG		

Anwendungen

Geprüfte Anwendungen:
FC

Getestete Reaktivität:
Maus

Hintergrundinformationen

Fc epsilon Receptor I alpha (FceR1a) is a single-pass type I membrane protein which contains 2 immunoglobulin-like domains. FceR1a forms a tetrameric complex with one beta and two gamma subunits (PMID: 19406478). FceR1 is the high-affinity receptor for the Fc region of immunoglobulin E (IgE) (PMID: 1532373). It is expressed on mast cells and basophils and plays a central role in the allergic response (PMID: 2148316).

Lagerung

Lagerungsbedingungen:
Bei 2-8°C lagern.

Lagerungspuffer:
PBS mit 0,1% Natriumazid, pH 7,3.

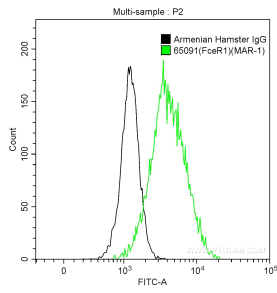
For technical support and original validation data for this product please contact:

T: 1 (888) 4PTGLAB (1-888-478-4522) (toll free in USA), or 1(312) 455-8498 (outside USA)

E: proteintech@ptglab.com
W: ptglab.com

This product is exclusively available under Proteintech Group brand and is not available to purchase from any other manufacturer.

Ausgewählte Validierungsdaten



1X10⁶ MC/9 cells were surface stained with 0.25 ug Anti-Mouse FcεR1 (65091-1-Ig, Clone: MAR-1) and CoraLite®488-Conjugated AffiniPure Goat Anti-Mouse IgG(H+L) at dilution 1:1000 (green), or stained with 0.25 ug Armenian Hamster IgG isotype control and CoraLite®488-Conjugated AffiniPure Goat Anti-Mouse IgG(H+L) at dilution 1:1000 (black). Cells were not fixed.