

Nur für Forschungszwecke

# CD45.1 Monoklonaler Antikörper

Katalog-Nr.:65092-1-Ig



## Allgemeine Informationen

**Katalog-Nr.:**

65092-1-Ig

**Größe:**

100ug, 0.5 mg/ml

**Wirt:**

Maus

**Isotyp:**

IgG2a

**GenBank-Zugangsnummer:**

BC028512

**GeneID (NCBI):**

19264

**Vollständiger Name:**

protein tyrosine phosphatase,  
receptor type, C

**Reinigungsmethode:**

Affinitätsreinigung

**CloneNo.:**

A20

## Anwendungen

**Geprüfte Anwendungen:**

FC

**Getestete Reaktivität:**

Maus

## Hintergrundinformationen

CD45, also known as protein tyrosine phosphatase, receptor type C, is a type I transmembrane protein expressed on the surface of all haematopoietic cells with the exception of erythrocytes and platelets (PMID: 3489673; 28615666). CD45 is a pan-haematopoietic cell marker and has been shown to be essential for T- and B-cell activation and signalling (PMID: 9429890; 16378097). Allelic variants of mouse CD45, CD45.1 (Ly5.1) and CD45.2 (Ly5.1), have been established as a marker system to track haematopoietic cells following congenic mouse bone marrow transplants (PMID: 28615666). CD45.2 is the common form and is expressed by most of the established strains, while CD45.1 is found in only a few like the SJL mouse strain (PMID: 3489673).

## Lagerung

**Lagerungsbedingungen:**

Bei 2-8°C lagern.

**Lagerungspuffer:**

Phosphatbasierter Puffer mit 0,09% Natriumazid, pH 7,2.

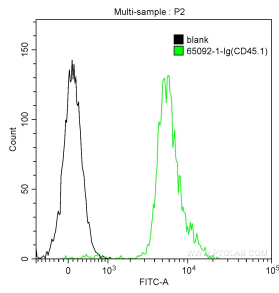
For technical support and original validation data for this product please contact:

T: 1 (888) 4PTGLAB (1-888-478-4522) (toll free  
in USA), or 1(312) 455-8498 (outside USA)

E: [proteintech@ptglab.com](mailto:proteintech@ptglab.com)  
W: [ptglab.com](http://ptglab.com)

**This product is exclusively available under Proteintech Group brand and is not available to purchase from any other manufacturer.**

## Ausgewählte Validierungsdaten



1X10<sup>6</sup> SJL mouse splenocytes were surface stained with 0.25 ug Anti-Mouse CD45.1 (65092-1-Ig, Clone:A20) and CoraLite®488-Conjugated AffiniPure Goat Anti-Mouse IgG(H+L) at dilution 1:1000 (green), or not stained (blank) (black). Cells were not fixed.