

Nur für Forschungszwecke

# CD40 Monoklonaler Antikörper

Katalog-Nr.:65103-1-Ig



## Allgemeine Informationen

<b>Katalog-Nr.:</b> 65103-1-Ig	<b>GenBank-Zugangsnummer:</b> BC012419	<b>Reinigungsmethode:</b> Affinitätsreinigung
<b>Größe:</b> 100ug, 0.5 mg/ml	<b>GeneID (NCBI):</b> 958	<b>CloneNo.:</b> G28.5
<b>Wirt:</b> Maus	<b>Vollständiger Name:</b> CD40 molecule, TNF receptor superfamily member 5	
<b>Isotyp:</b> IgG1, kappa	<b>Berechnete Masse:</b> 277 aa, 31 kDa	

## Anwendungen

**Geprüfte Anwendungen:**  
FC

**Getestete Reaktivität:**  
Human

## Hintergrundinformationen

CD40, also named as TNFRSF5 and Bp50, is a type I transmembrane protein that belongs to the tumor necrosis factor-R (TNF-R) family (PMID: 10647992). CD40 is expressed on B cells, dendritic cells (DCs), monocytes, platelets, and macrophages as well as by non-hematopoietic cells such as myofibroblasts, fibroblasts, epithelial, and endothelial cells (PMID: 19426221). It is a receptor for TNFSF5/CD40LG. CD40L/CD40 interactions are essential for immunoglobulin (Ig) isotype switching, germinal center formation and the development of B cell memory (PMID: 7516405; 11675497).

## Lagerung

**Lagerungsbedingungen:**  
Store at 2-8°C. Stable for one year after shipment.  
**Lagerungspuffer:**  
Phosphatbasierter Puffer mit 0,09% Natriumazid, pH 7,2.

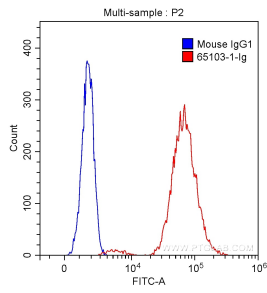
For technical support and original validation data for this product please contact:

T: 1 (888) 4PTGLAB (1-888-478-4522) (toll free in USA), or 1(312) 455-8498 (outside USA)

E: [proteintech@ptglab.com](mailto:proteintech@ptglab.com)  
W: [ptglab.com](http://ptglab.com)

**This product is exclusively available under Proteintech Group brand and is not available to purchase from any other manufacturer.**

## Ausgewählte Validierungsdaten



1X10<sup>6</sup> Raji cells were surface stained with 0.50 ug Anti-Human CD40 (65103-1-Ig, Clone: G28.5) (red) or 0.50 ug isotype control antibody (blue) and CoraLite®488-Conjugated AffiniPure Goat Anti-Mouse IgG(H+L) with dilution of 1:1000. Cells were not fixed.