

Nur für Forschungszwecke

CD45RA Monoklonaler Antikörper

Katalog-Nr.:65108-1-Ig



Allgemeine Informationen

Katalog-Nr.:
65108-1-Ig

Größe:
500ug, 0.5 mg/ml

Wirt:
Maus

Isotyp:
IgG2b, kappa

GenBank-Zugangsnummer:
BC014239

GeneID (NCBI):
5788

Vollständiger Name:
protein tyrosine phosphatase,
receptor type, C

Reinigungsmethode:
Affinitätsreinigung

CloneNo.:
HI100

Anwendungen

Geprüfte Anwendungen:
FC

Getestete Reaktivität:
Human

Hintergrundinformationen

CD45, also known as protein tyrosine phosphatase, receptor type C, is a type I transmembrane protein expressed on the surface of all haematopoietic cells with the exception of erythrocytes and platelets (PMID: 3489673; 28615666). CD45 is a pan-haematopoietic cell marker and has been shown to be essential for T- and B-cell activation and signalling (PMID: 9429890; 16378097). CD45 exists as multiple isoforms due to alternative splicing of three exons (4, 5, and 6, designated A, B, and C) in the extracellular domain (PMID: 12414720). CD45RA is expressed on naïve T cells, B cells, and monocytes (PMID: 1830500; 14687231).

Lagerung

Lagerungsbedingungen:
Store at 2-8°C. Stable for one year after shipment.
Lagerungspuffer:
PBS with 0.09% sodium azide.

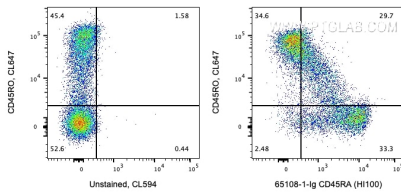
For technical support and original validation data for this product please contact:

T: 1 (888) 4PTGLAB (1-888-478-4522) (toll free
in USA), or 1(312) 455-8498 (outside USA)

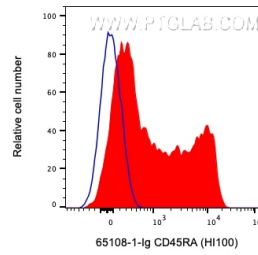
E: proteintech@ptglab.com
W: ptglab.com

This product is exclusively available under Proteintech Group brand and is not available to purchase from any other manufacturer.

Ausgewählte Validierungsdaten



1X10⁶ human PBMCs were surface co-stained with CL647 Anti-Human CD45RO and 0.2 ug Anti-Human CD45RA (65108-1-Ig, Clone:HI100) and CoraLite®594-Conjugated AffiniPure Goat Anti-Mouse IgG(H+L) at dilution 1:1000 or unstained. Cells were not fixed. Lymphocytes were gated.



1X10⁶ human PBMCs were surface stained with 0.2 ug Anti-Human CD45RA (65108-1-Ig, Clone:HI100) and CoraLite®594-Conjugated AffiniPure Goat Anti-Mouse IgG(H+L) at dilution 1:1000 (red) or unstained. Cells were not fixed. Lymphocytes were gated.