

Nur für Forschungszwecke

# CD38 Monoklonaler Antikörper

Katalog-Nr.: 65111-1-Ig



## Allgemeine Informationen

<b>Katalog-Nr.:</b> 65111-1-Ig	<b>GenBank-Zugangsnummer:</b> BC007964	<b>Reinigungsmethode:</b> Affinitätsreinigung
<b>Größe:</b> 500µg, 500 µg/ml	<b>GeneID (NCBI):</b> 952	<b>CloneNo.:</b> HIT2
<b>Wirt:</b> Maus	<b>Vollständiger Name:</b> CD38 molecule	
<b>Isotyp:</b> IgG1, kappa	<b>Berechnete Masse:</b> 300 aa, 34 kDa	

## Anwendungen

**Geprüfte Anwendungen:**  
FC

**Getestete Reaktivität:**  
Human

## Hintergrundinformationen

CD38, also known as ADP-ribosyl cyclase 1, is a type II transmembrane glycoprotein with a short N-terminal cytoplasmic tail, a single membrane-spanning domain, and a C-terminal extracellular region with four N-glycosylation sites (PMID: 2319135). The extracellular domain of CD38 has bifunctional enzyme activities that catalyze synthesis of cyclic ADP ribose from nicotinamide adenine dinucleotide (NAD) and hydrolysis of cyclic ADP ribose to adenosine diphosphoribose (PMID: 10636863). CD38 is expressed on a variety of hematopoietic and non-hematopoietic cells and is involved in diverse processes such as generation of calcium-mobilizing metabolites, cell activation, and chemotaxis (PMID: 25938500).

## Lagerung

**Lagerungsbedingungen:**  
Store at 2-8°C. Stable for one year after shipment.

**Lagerungspuffer:**  
PBS with 0.09% sodium azide.

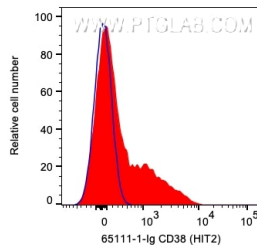
For technical support and original validation data for this product please contact:

T: 1 (888) 4PTGLAB (1-888-478-4522) (toll free in USA), or 1(312) 455-8498 (outside USA)

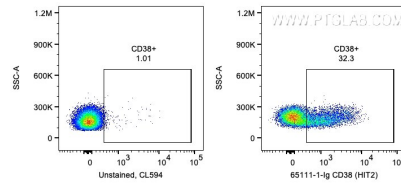
E: [proteintech@ptglab.com](mailto:proteintech@ptglab.com)  
W: [ptglab.com](http://ptglab.com)

This product is exclusively available under Proteintech Group brand and is not available to purchase from any other manufacturer.

## Ausgewählte Validierungsdaten



1X10<sup>6</sup> human PBMCs were surface stained with 0.2 ug Anti-Human CD38 (65111-1-Ig, Clone:HIT2) and CoraLite®594-Conjugated AffiniPure Goat Anti-Mouse IgG(H+L) at dilution 1:1000 (red) or unstained. Cells were not fixed. Lymphocytes were gated.



1X10<sup>6</sup> human PBMCs were surface stained with 0.2 ug Anti-Human CD38 (65111-1-Ig, Clone:HIT2) and CoraLite®594-Conjugated AffiniPure Goat Anti-Mouse IgG(H+L) at dilution 1:1000 or unstained. Cells were not fixed. Lymphocytes were gated.