

Nur für Forschungszwecke

CD8a Monoklonaler Antikörper

Katalog-Nr.: 65113-1-Ig



Allgemeine Informationen

Katalog-Nr.: 65113-1-Ig	GenBank-Zugangsnummer: BC025715	Reinigungsmethode: Affinitätsreinigung
Größe: 100µg, 0.5 mg/ml	GeneID (NCBI): 925	CloneNo.: Hit8a
Wirt: Maus	Vollständiger Name: CD8a molecule	
Isotyp: IgG1, kappa	Berechnete Masse: 235 aa, 26 kDa	

Anwendungen

Geprüfte Anwendungen:
FC

Getestete Reaktivität:
Human

Hintergrundinformationen

CD8 is a transmembrane glycoprotein composed of two disulfide-linked chains. It can be present as a homodimer of CD8a or as a heterodimer of CD8a and CD8β (PMID: 3264320; 8253791). CD8 is found on most thymocytes. The majority of class I-restricted T cells express mostly the CD8aβ heterodimer while CD8aa homodimers alone have been found on some gut intraepithelial T cells, on some T cell receptor (TCR) γδ T cells and on NK cells (PMID: 2111591; 1831127; 8420975). CD8 acts as a co-receptor that binds to MHC class-I and participates in cytotoxic T cell activation (PMID: 8499079). During T cell development, CD8 is required for positive selection of CD4-/CD8+ T cells (PMID: 1968084).

Lagerung

Lagerungsbedingungen:
Store at 2-8°C. Stable for one year after shipment.

Lagerungspuffer:
Phosphatbasierter Puffer mit 0,09% Natriumazid, pH 7,2.

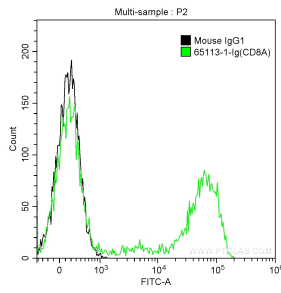
For technical support and original validation data for this product please contact:

T: 1 (888) 4PTGLAB (1-888-478-4522) (toll free in USA), or 1(312) 455-8498 (outside USA)

E: proteintech@ptglab.com
W: ptglab.com

This product is exclusively available under Proteintech Group brand and is not available to purchase from any other manufacturer.

Ausgewählte Validierungsdaten



1X10⁶ human peripheral blood lymphocytes were surface stained with 0.25 ug Anti-Human CD8a (65113-1-Ig, Clone: Hit8a) and CoraLite®488-Conjugated AffiniPure Goat Anti-Mouse IgG(H+L) at dilution 1:1000 (green), or stained with 0.25 ug mouse IgG1 isotype control antibody and CoraLite®488-Conjugated AffiniPure Goat Anti-Mouse IgG(H+L) at dilution 1:1000 (black). Cells were not fixed.