

Nur für Forschungszwecke

CD161 Monoklonaler Antikörper

Katalog-Nr.:65115-1-Ig



Allgemeine Informationen

Katalog-Nr.: 65115-1-Ig	GenBank-Zugangsnummer: BC114516	Reinigungsmethode: Affinitätsreinigung
Größe: 100ug, 0.5 mg/ml	GeneID (NCBI): 3820	CloneNo.: HP-3G10
Wirt: Maus	Vollständiger Name: killer cell lectin-like receptor subfamily B, member 1	
Isotyp: IgG1	Berechnete Masse: 225 aa, 25 kDa	

Anwendungen

Geprüfte Anwendungen:
FC

Getestete Reaktivität:
Human

Hintergrundinformationen

Lagerung

Lagerungsbedingungen:
Bei 2-8°C lagern.

Lagerungspuffer:
Phosphatbasierter Puffer mit 0,09% Natriumazid, pH 7,2.

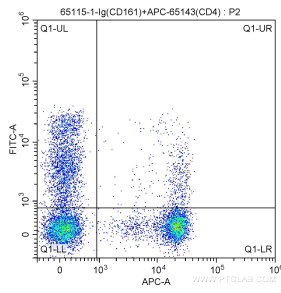
For technical support and original validation data for this product please contact:

T: 1 (888) 4PTGLAB (1-888-478-4522) (toll free
in USA), or 1(312) 455-8498 (outside USA)

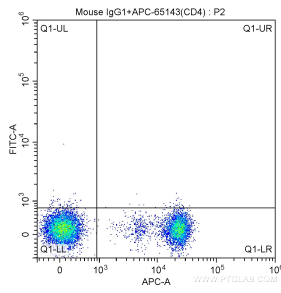
E: proteintech@ptglab.com
W: ptglab.com

This product is exclusively available under Proteintech Group brand and is not available to purchase from any other manufacturer.

Ausgewählte Validierungsdaten



1X10⁶ human peripheral blood lymphocytes were surface stained with APC Anti-Human CD4 (APC-65143, Clone: RPA-T4), and 1 ug Anti-Human CD161 (65115-1-Ig, Clone: HP-3G10) and FITC anti-mouse IgG1 antibody at dilution 1:200. Cells were not fixed.



1X10⁶ human peripheral blood lymphocytes were surface stained with APC Anti-Human CD4 (APC-65143, Clone: RPA-T4), and 1 ug mouse IgG1 isotype control and FITC anti-mouse IgG1 antibody at dilution 1:200. Cells were not fixed.