

Nur für Forschungszwecke

CD11b Monoklonaler Antikörper

Katalog-Nr.: 65116-1-Ig **2 Publikationen**



Allgemeine Informationen

Katalog-Nr.: 65116-1-Ig	GenBank-Zugangsnummer: BC096346	Reinigungsmethode: Affinitätsreinigung
Größe: 500ug, 0.5 mg/ml	GeneID (NCBI): 3684	CloneNo.: ICRF44
Wirt: Maus	Vollständiger Name: integrin, alpha M (complement component 3 receptor 3 subunit)	
Isotyp: IgG1, kappa	Berechnete Masse: 1152 aa, 127 kDa	

Anwendungen

Geprüfte Anwendungen:
FC

In Publikationen genannte Anwendungen:
FC

Getestete Reaktivität:
Human

Zitierte Arten:
Human

Hintergrundinformationen

Integrins are cell adhesion receptors that are heterodimers composed of non-covalently associated α and β subunits (PMID: 9779984). CD11b, also known as Integrin alpha M or CR3A, belongs to the integrin alpha chain family. CD11b forms an α/β heterodimer with CD18 (integrin β 2). CD11b/CD18 is implicated in various adhesive interactions of monocytes, macrophages and granulocytes as well as in mediating the uptake of complement-coated particles and pathogens (PMID: 9558116; 20008295). CD11b/CD18 is a receptor for the complement protein fragment iC3b, and is also a receptor for fibrinogen, factor X and ICAM1 (PMID: 2971974; 15485828).

Bemerkenswerte Veröffentlichungen

Verfasser	Pubmed ID	Journal	Anwendung
Hao Lei	36173787	J Med Chem	FC
Bin Qi	33363140	Front Cell Dev Biol	FC

Lagerung

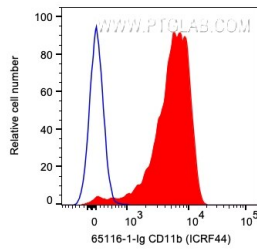
Lagerungsbedingungen:
Store at 2-8°C. Stable for one year after shipment.

Lagerungspuffer:
PBS with 0.09% sodium azide.

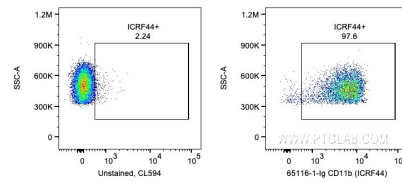
For technical support and original validation data for this product please contact:
T: 1 (888) 4PTGLAB (1-888-478-4522) (toll free in USA), or 1(312) 455-8498 (outside USA)
E: proteintech@ptglab.com
W: ptglab.com

This product is exclusively available under Proteintech Group brand and is not available to purchase from any other manufacturer.

Ausgewählte Validierungsdaten



1X10⁶ human PBMCs were surface stained with 0.5 ug Anti-Human CD11b (65116-1-Ig, Clone:ICRF44) and CoraLite®594-Conjugated AffiniPure Goat Anti-Mouse IgG(H+L) at dilution 1:1000 (red) or unstained. Cells were not fixed. Monocytes were gated.



1X10⁶ human PBMCs were surface stained with 0.5 ug Anti-Human CD11b (65116-1-Ig, Clone:ICRF44) and CoraLite®594-Conjugated AffiniPure Goat Anti-Mouse IgG(H+L) at dilution 1:1000 or unstained. Cells were not fixed. Monocytes were gated.