

Nur für Forschungszwecke

CD62L (L-Selectin) Monoklonaler Antikörper



Katalog-Nr.: 65123-1-Ig **1 Publikationen**

Allgemeine Informationen

Katalog-Nr.: 65123-1-Ig	GenBank-Zugangsnummer: BC052681	Reinigungsmethode: Affinitätsreinigung
Größe: 100ug, 0.5 mg/ml	GeneID (NCBI): 20343	CloneNo.: MEL-14
Wirt: Ratte	Vollständiger Name: selectin, lymphocyte	
Isotyp: IgG2a, kappa		

Anwendungen

Geprüfte Anwendungen:
FC

In Publikationen genannte Anwendungen:
FC

Getestete Reaktivität:
Maus

Zitierte Arten:
Maus

Hintergrundinformationen

L-selectin, also known as SELL or CD62L, is a member of the selectin family of adhesion molecules that includes E-selectin and P-selectin (PMID: 2663882, 2473156, 1382078). L-selectin is a protein with the calculated molecular mass of 42 kDa but actually 95-105 kDa on neutrophils and 74 kDa on lymphocytes because of the highly glycosylation (PMID: 1694883, 1695155). L-selectin is expressed on the surface of most leukocytes, including lymphocytes, neutrophils, monocytes, eosinophils, hematopoietic progenitor cells, and immature thymocytes (PMID: 1694883, 1688580). L-selectin mediates the binding of lymphocytes to high endothelial venules (HEV) of peripheral lymph nodes through interactions with a constitutively expressed ligand, and are also involved in lymphocyte, neutrophil, and monocyte attachment to endothelium at sites of inflammation (PMID: 1382078).

Bemerkenswerte Veröffentlichungen

Verfasser	Pubmed ID	Journal	Anwendung
Haoran Wang	35087966	Bioact Mater	FC

Lagerung

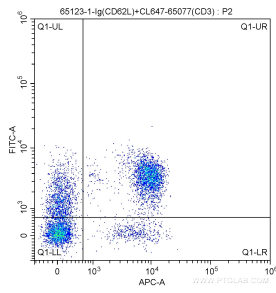
Lagerungsbedingungen:
Store at 2-8°C. Stable for one year after shipment.

Lagerungspuffer:
Phosphatbasierter Puffer mit 0,09% Natriumazid, pH 7,2.

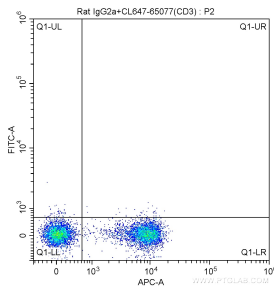
For technical support and original validation data for this product please contact:
T: 1 (888) 4PTGLAB (1-888-478-4522) (toll free in USA), or 1(312) 455-8498 (outside USA)
E: proteintech@ptglab.com
W: ptglab.com

This product is exclusively available under Proteintech Group brand and is not available to purchase from any other manufacturer.

Ausgewählte Validierungsdaten



1X10⁶ C57BL/6 mouse splenocytes were surface stained with 5 ul CoraLite® Plus 647-conjugated Anti-Mouse CD3 (CL647-65077, Clone: 17A2), and 0.5 ug Anti-Mouse CD62L (L-Selectin) (65123-1-Ig, Clone: MEL-14) and FITC Anti-Rat IgG2a Antibody at dilution 1:200. Cells were not fixed.



1X10⁶ C57BL/6 mouse splenocytes were surface stained with 5 ul CoraLite® Plus 647-conjugated Anti-Mouse CD3 (CL647-65077, Clone: 17A2), and 0.5 ug Rat IgG2a Isotype Control and FITC Anti-Rat IgG2a Antibody at dilution 1:200. Cells were not fixed.