

Nur für Forschungszwecke

IgG1 Isotype Control Monoklonaler Antikörper



Katalog-Nr.:65124-1-Ig

Allgemeine Informationen

Katalog-Nr.: 65124-1-Ig	GenBank-Zugangsnummer: GeneID (NCBI): 16017	Reinigungsmethode: Affinitätsreinigung
Größe: 100ug, 0.5 mg/ml	Vollständiger Name: immunoglobulin heavy constant gamma 1 (G1m marker)	CloneNo.: MOPC-21
Wirt: Maus		
Isotyp: IgG1		

Anwendungen

Geprüfte Anwendungen:
FC

Getestete Reaktivität:

Hintergrundinformationen

The MOPC-21 immunoglobulin is useful as an isotype-matched control. The MOPC-21 immunoglobulin has an unknown binding specificity and is used as an isotype control for mouse IgG1 antibodies. This antibody has been quality-tested for flow cytometry as negative control.

Lagerung

Lagerungsbedingungen:
Bei 2-8°C lagern.

Lagerungspuffer:
Phosphatbasierter Puffer mit 0,09% Natriumazid, pH 7,2.

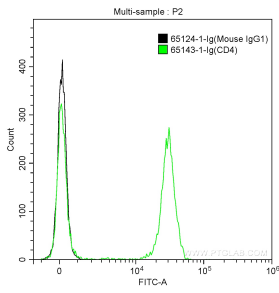
For technical support and original validation data for this product please contact:

T: 1 (888) 4PTGLAB (1-888-478-4522) (toll free
in USA), or 1(312) 455-8498 (outside USA)

E: proteintech@ptglab.com
W: ptglab.com

This product is exclusively available under Proteintech Group brand and is not available to purchase from any other manufacturer.

Ausgewählte Validierungsdaten



1X10⁶ human peripheral blood lymphocytes were surface stained with 1 ug Mouse IgG1 Isotype Control (65124-1-Ig, Clone: MOPC-21) and CoraLite®488-Conjugated AffiniPure Goat Anti-Mouse IgG(H+L) at dilution 1:1000 (black), or stained with 1 ug Anti-Human CD4 (65143-1-Ig, Clone: RPA-T4) and CoraLite®488-Conjugated AffiniPure Goat Anti-Mouse IgG(H+L) at dilution 1:1000 (green). Cells were not fixed.