

Nur für Forschungszwecke

# CD3 Monoklonaler Antikörper

Katalog-Nr.:65133-1-Ig



## Allgemeine Informationen

<b>Katalog-Nr.:</b> 65133-1-Ig	<b>GenBank-Zugangsnummer:</b> BC049847	<b>Reinigungsmethode:</b> Affinitätsreinigung
<b>Größe:</b> 100ug, 0.5 mg/ml	<b>GeneID (NCBI):</b> 916	<b>CloneNo.:</b> OKT3
<b>Wirt:</b> Maus	<b>Vollständiger Name:</b> CD3e molecule, epsilon (CD3-TCR complex)	
<b>Isotyp:</b> IgG2a	<b>Berechnete Masse:</b> 207 aa, 23 kDa	

## Anwendungen

**Geprüfte Anwendungen:**  
FC

**Getestete Reaktivität:**  
Human

## Hintergrundinformationen

CD3 is a multimeric protein associated with the T-cell receptor (TCR) to form a complex involved in antigen recognition and signal transduction (PMID: 15885124). CD3 is composed of CD3 $\gamma$ ,  $\delta$ ,  $\epsilon$ , and  $\zeta$  chains (PMID: 1826255). It is expressed by thymocytes in a developmentally regulated manner, T cells, and some NK cells (PMID: 3289580). The TCR recognizes antigens bound to major histocompatibility complex (MHC) molecules. TCR-mediated peptide-MHC recognition is transmitted to the CD3 complex, leading to the intracellular signal transduction (PMID: 11985657).

## Lagerung

**Lagerungsbedingungen:**  
Bei 2-8°C lagern.  
**Lagerungspuffer:**  
Phosphatbasierter Puffer mit 0,09% Natriumazid, pH 7,2.

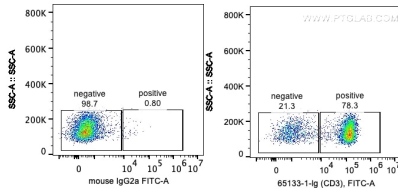
For technical support and original validation data for this product please contact:

T: 1 (888) 4PTGLAB (1-888-478-4522) (toll free in USA), or 1(312) 455-8498 (outside USA)

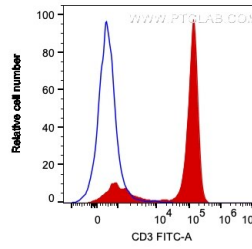
E: [proteintech@ptglab.com](mailto:proteintech@ptglab.com)  
W: [ptglab.com](http://ptglab.com)

**This product is exclusively available under Proteintech Group brand and is not available to purchase from any other manufacturer.**

## Ausgewählte Validierungsdaten



1X10<sup>6</sup> human PBMCs were surface stained with 0.2 ug Anti-Human CD3 (65133-1-Ig, Clone: OKT3) and CoraLite®488-Conjugated AffiniPure Goat Anti-Mouse IgG(H+L) at dilution 1:1000, or 0.2 ug Mouse IgG2a Isotype Control and CoraLite®488-Conjugated AffiniPure Goat Anti-Mouse IgG(H+L) at dilution 1:1000. Cells were not fixed. Lymphocytes are gated.



1X10<sup>6</sup> human PBMCs were surface stained with 0.2 ug Anti-Human CD3 (65133-1-Ig, Clone: OKT3) and CoraLite®488-Conjugated AffiniPure Goat Anti-Mouse IgG(H+L) at dilution 1:1000 (red), or 0.2 ug Mouse IgG2a Isotype Control and CoraLite®488-Conjugated AffiniPure Goat Anti-Mouse IgG(H+L) at dilution 1:1000 (blue). Cells were not fixed. Lymphocytes are gated.