

Nur für Forschungszwecke

NK1.1 (CD161) Monoklonaler Antikörper

Katalog-Nr.: 65138-1-Ig



Allgemeine Informationen

Katalog-Nr.: 65138-1-Ig	GenBank-Zugangsnummer: BC120707	Reinigungsmethode: Affinitätsreinigung
Größe: 100ug, 0.5 mg/ml	GeneID (NCBI): 17057	CloneNo.: PK136
Wirt: Maus	Vollständiger Name: killer cell lectin-like receptor subfamily B member 1A	
Isotyp: IgG2a		

Anwendungen

Geprüfte Anwendungen:
FC

Getestete Reaktivität:
Maus

Hintergrundinformationen

NK1.1 (CD161), also known as KLRB1 or NKR-P1A, is a type II transmembrane C-type lectin-like receptor and is expressed on the cell membrane as disulfide-linked homodimer (PMID: 8077657). It is expressed by the majority of NK cells and subsets of peripheral T cells, including both CD4+ and CD8+ T cells, and is expressed preferentially on adult T cells with a "memory" antigenic phenotype (PMID: 8077657; 22566826). Expression of CD161 correlates with the cytotoxic function of CD16+ NK cells, and ligation of CD161 with its ligand LLT1 inhibits NK cell cytotoxicity and cytokine secretion (PMID: 29686665).

Lagerung

Lagerungsbedingungen:
Bei 2-8°C lagern.

Lagerungspuffer:
Phosphatbasierter Puffer mit 0,09% Natriumazid, pH 7,2.

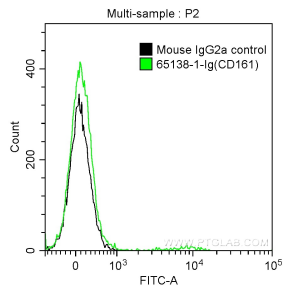
For technical support and original validation data for this product please contact:

T: 1 (888) 4PTGLAB (1-888-478-4522) (toll free in USA), or 1(312) 455-8498 (outside USA)

E: proteintech@ptglab.com
W: ptglab.com

This product is exclusively available under Proteintech Group brand and is not available to purchase from any other manufacturer.

Ausgewählte Validierungsdaten



1X10⁶ C57BL/6 mouse splenocytes were surface stained with 0.5 ug Anti-Mouse NK1.1 (CD161) (65138-1-ig, Clone: PK136) and FITC anti-Mouse IgG2a Antibody at dilution 1:100 (green), or stained with 0.5 ug mouse IgG2a isotype control and FITC anti-Mouse IgG2a Antibody at dilution 1:100 (black). Cells were not fixed.