

Nur für Forschungszwecke

Ly-6G/Ly-6C (Gr-1) Monoklonaler Antikörper



Katalog-Nr.: 65140-1-Ig **9 Publikationen**

Allgemeine Informationen

Katalog-Nr.: 65140-1-Ig	GenBank-Zugangsnummer: X70920	Reinigungsmethode: Affinitätsreinigung
Größe: 500ug, 0.5 mg/ml	GeneID (NCBI): 546644	CloneNo.: RB6-8C5
Wirt: Ratte	Vollständiger Name: lymphocyte antigen 6 complex, locus G	
Isotyp: IgG2b, kappa		

Anwendungen

Geprüfte Anwendungen:
FC

In Publikationen genannte Anwendungen:
FC, IF, IHC

Getestete Reaktivität:
Maus

Zitierte Arten:
Maus

Hintergrundinformationen

Ly-6G (Lymphocyte antigen 6 complex, locus G), also known as Gr-1, is a 21-25 kDa, glycosylphosphatidylinositol-anchored protein expressed on myeloid lineage cells in mouse bone marrow (PMID: 8360469). The expression of Ly-6G increases on neutrophils as they differentiate from immature cells in the bone marrow to mature cells in the blood and spleen (PMID: 8890901). Antibodies targeting Ly6G (RB6-8C5 or 1A8) are commonly used in studies aimed at identifying the role of neutrophils (PMID: 23543767). The RB6-8C5 mAb has been reported to cross-react with Ly-6C on cells expressing Ly-6C (PMID: 8360469).

Bemerkenswerte Veröffentlichungen

Verfasser	Pubmed ID	Journal	Anwendung
Han Li	36195972	Gut Microbes	IF
Yitong Liu	34184309	J Leukoc Biol	IF,FC
Zihan Qin	35081368	J Mol Cell Cardiol	IF

Lagerung

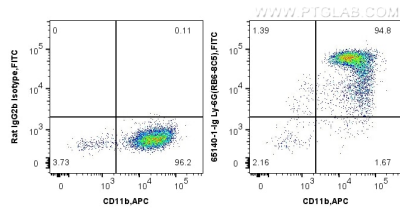
Lagerungsbedingungen:
Store at 2-8°C. Stable for one year after shipment.

Lagerungspuffer:
PBS with 0.09% sodium azide.

For technical support and original validation data for this product please contact:
T: 1 (888) 4PTGLAB (1-888-478-4522) (toll free in USA), or 1(312) 455-8498 (outside USA)
E: proteintech@ptglab.com
W: ptglab.com

This product is exclusively available under Proteintech Group brand and is not available to purchase from any other manufacturer.

Ausgewählte Validierungsdaten



1x10⁶ mouse bone marrow cells were surface co-stained with APC Anti-Mouse CD11b and 0.5 µg Anti-Mouse Ly-6G/Ly-6C (Gr-1) (65140-1-Ig, Clone:RB6-8C5) and FITC anti-Rat IgG2b Antibody at dilution 1:1000, or 0.5 µg Rat IgG2b isotype control. Cells were not fixed.