

Nur für Forschungszwecke

CD8a Monoklonaler Antikörper

Katalog-Nr.: 65144-1-Ig **3 Publikationen**



Allgemeine Informationen

Katalog-Nr.: 65144-1-Ig	GenBank-Zugangsnummer: BC025715	Reinigungsmethode: Affinitätsreinigung
Größe: 100ug, 0.5 mg/ml	GeneID (NCBI): 925	CloneNo.: RPA-T8
Wirt: Maus	Vollständiger Name: CD8a molecule	
Isotyp: IgG1	Berechnete Masse: 235 aa, 26 kDa	

Anwendungen

Geprüfte Anwendungen:
FC

In Publikationen genannte Anwendungen:
IHC, WB

Getestete Reaktivität:
Human

Zitierte Arten:
Hausschwein, Human

Hintergrundinformationen

CD8 is a transmembrane glycoprotein composed of two disulfide-linked chains. It can be present as a homodimer of CD8a or as a heterodimer of CD8a and CD8β (PMID: 3264320; 8253791). CD8 is found on most thymocytes. The majority of class I-restricted T cells express mostly the CD8aβ heterodimer while CD8aa homodimers alone have been found on some gut intraepithelial T cells, on some T cell receptor (TCR) γδ T cells and on NK cells (PMID: 2111591; 1831127; 8420975). CD8 acts as a co-receptor that binds to MHC class-I and participates in cytotoxic T cell activation (PMID: 8499079). During T cell development, CD8 is required for positive selection of CD4-/CD8+ T cells (PMID: 1968084).

Bemerkenswerte Veröffentlichungen

Verfasser	Pubmed ID	Journal	Anwendung
Ling Ding	34830884	Cancers (Basel)	WB
Mingyang Ding	35867564	J Virol	IHC
Si-Yuan Zhang	34277389	Front Oncol	IHC

Lagerung

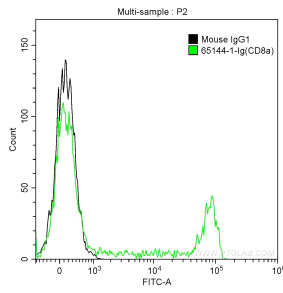
Lagerungsbedingungen:
Bei 2-8°C lagern.

Lagerungspuffer:
Phosphatbasierter Puffer mit 0,09% Natriumazid, pH 7,2.

For technical support and original validation data for this product please contact:
T: 1 (888) 4PTGLAB (1-888-478-4522) (toll free in USA), or 1(312) 455-8498 (outside USA)
E: proteintech@ptglab.com
W: ptglab.com

This product is exclusively available under Proteintech Group brand and is not available to purchase from any other manufacturer.

Ausgewählte Validierungsdaten



1X10⁶ human peripheral blood lymphocytes were surface stained with 0.5 ug Anti-Human CD8a (65144-1-Ig, Clone:RPA-T8) and CoraLite®488-Conjugated AffiniPure Goat Anti-Mouse IgG(H+L) at dilution 1:1000 (green), or stained with 0.5 ug isotype control antibody and CoraLite®488-Conjugated AffiniPure Goat Anti-Mouse IgG(H+L) at dilution 1:1000 (black). Cells were not fixed.