

Nur für Forschungszwecke

CD3 Monoklonaler Antikörper

Katalog-Nr.:65151-1-Ig



Allgemeine Informationen

Katalog-Nr.: 65151-1-Ig	GenBank-Zugangsnummer: BC049847	Reinigungsmethode: Affinitätsreinigung
Größe: 100ug, 0.5 mg/ml	GeneID (NCBI): 916	CloneNo.: UCHT1
Wirt: Maus	Vollständiger Name: CD3e molecule, epsilon (CD3-TCR complex)	
Isotyp: IgG1, kappa	Berechnete Masse: 207 aa, 23 kDa	

Anwendungen

Geprüfte Anwendungen:
FC

Getestete Reaktivität:
Human

Hintergrundinformationen

CD3 is a multimeric protein associated with the T-cell receptor (TCR) to form a complex involved in antigen recognition and signal transduction (PMID: 15885124). CD3 is composed of CD3 γ , δ , ϵ , and ζ chains (PMID: 1826255). It is expressed by thymocytes in a developmentally regulated manner, T cells, and some NK cells (PMID: 3289580). The TCR recognizes antigens bound to major histocompatibility complex (MHC) molecules. TCR-mediated peptide-MHC recognition is transmitted to the CD3 complex, leading to the intracellular signal transduction (PMID: 11985657).

Lagerung

Lagerungsbedingungen:
Store at 2-8°C. Stable for one year after shipment.
Lagerungspuffer:
Phosphatbasierter Puffer mit 0,09% Natriumazid, pH 7,2.

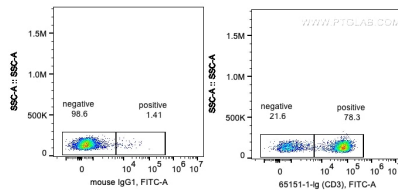
For technical support and original validation data for this product please contact:

T: 1 (888) 4PTGLAB (1-888-478-4522) (toll free in USA), or 1(312) 455-8498 (outside USA)

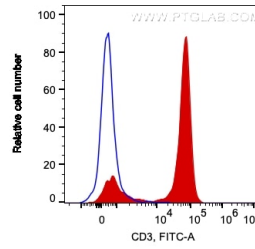
E: proteintech@ptglab.com
W: ptglab.com

This product is exclusively available under Proteintech Group brand and is not available to purchase from any other manufacturer.

Ausgewählte Validierungsdaten



1X10⁶ human PBMCs were surface stained with 0.2 ug Anti-Human CD3 (65151-1-Ig, Clone:UCHT1) and CoraLite®488-Conjugated AffiniPure Goat Anti-Mouse IgG(H+L) at dilution 1:1000, or 0.2 ug Mouse IgG1 Isotype Control (66360-1-Ig, Clone: T1F8D3F10) and CoraLite®488-Conjugated AffiniPure Goat Anti-Mouse IgG(H+L) at dilution 1:1000. Cells were not fixed. Lymphocytes were gated.



1X10⁶ human PBMCs were surface stained with 0.2 ug Anti-Human CD3 (65151-1-Ig, Clone:UCHT1) and CoraLite®488-Conjugated AffiniPure Goat Anti-Mouse IgG(H+L) at dilution 1:1000 (red), or 0.2 ug Mouse IgG1 Isotype Control (66360-1-Ig, Clone: T1F8D3F10) and CoraLite®488-Conjugated AffiniPure Goat Anti-Mouse IgG(H+L) at dilution 1:1000 (blue). Cells were not fixed. Lymphocytes were gated.