

Nur für Forschungszwecke

CD206 Monoklonaler Antikörper

Katalog-Nr.: 65155-1-Ig



Allgemeine Informationen

Katalog-Nr.:

65155-1-Ig

Größe:

100µg, 1 mg/ml

Wirt:

Maus

Isotyp:

IgG1, kappa

GenBank-Zugangsnummer:

NM_002438

GeneID (NCBI):

4360

Vollständiger Name:

mannose receptor, C type 1

Berechnete Masse:

166 kDa

Reinigungsmethode:

Mit Protein-A-

Affinitätschromatographie gereinigt

CloneNo.:

15-2

Anwendungen

Geprüfte Anwendungen:

FC

Getestete Reaktivität:

Human

Hintergrundinformationen

CD206, also named as MMR, CLEC13D and MRC1, is a type I membrane receptor that mediates the endocytosis of glycoproteins by macrophages. CD206 has been shown to bind high-mannose structures on the surface of potentially pathogenic viruses, bacteria, and fungi so that they can be neutralized by phagocytic engulfment. CD206 is a 170 kDa transmembrane protein which contains 5 domains: an amino-terminal cysteine-rich region, a fibronectin type II repeat, a series of eight tandem lectin-like carbohydrate recognition domains (responsible for the recognition of mannose and fucose), a transmembrane domain, and an intracellular carboxy-terminal tail. It is expressed on most tissue macrophages, in vitro derived dendritic cells, lymphatic and sinusoidal endothelia.

Lagerung

Lagerungsbedingungen:

Store at 2-8°C. Stable for one year after shipment.

Lagerungspuffer:

PBS mit 0,1% Natriumazid.

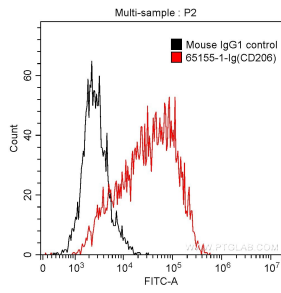
For technical support and original validation data for this product please contact:

T: 1 (888) 4PTGLAB (1-888-478-4522) (toll free
in USA), or 1(312) 455-8498 (outside USA)

E: proteintech@ptglab.com
W: ptglab.com

This product is exclusively available under Proteintech Group brand and is not available to purchase from any other manufacturer.

Ausgewählte Validierungsdaten



Human monocyte-derived dendritic cells (monocytes stimulated with GM-CSF and IL-4) were surface stained with 0.5 µg Anti-Human CD206 (65155-1-Ig, Clone:15-2) and CoraLite®488-Conjugated AffiniPure Goat Anti-Mouse IgG(H+L) at dilution 1:1000 (red), or stained with 0.5 µg mouse IgG1 isotype control and CoraLite®488-Conjugated AffiniPure Goat Anti-Mouse IgG(H+L) at dilution 1:1000 (black). Cells were not fixed.