

Nur für Forschungszwecke

# MICA/MICB Monoklonaler Antikörper



Katalog-Nr.: 65161-1-Ig **3 Publikationen**

## Allgemeine Informationen

<b>Katalog-Nr.:</b> 65161-1-Ig	<b>GenBank-Zugangsnummer:</b> BC016929	<b>Reinigungsmethode:</b> Mit Protein-A- Affinitätschromatographie gereinigt
<b>Größe:</b> 100ug, 1 mg/ml	<b>GeneID (NCBI):</b> 4276	<b>CloneNo.:</b> 6D4
<b>Wirt:</b> Maus	<b>Vollständiger Name:</b> MHC class I polypeptide-related sequence A	
<b>Isotyp:</b> IgG2a, kappa	<b>Berechnete Masse:</b> 383 aa, 43 kDa	

## Anwendungen

**Geprüfte Anwendungen:**  
FC

**In Publikationen genannte Anwendungen:**  
WB

**Getestete Reaktivität:**  
Human

**Zitierte Arten:**  
Human

## Hintergrundinformationen

Human MHC class I chain-related genes located within the HLA class I region of chromosome 6 encode MHC class I chain-related A and B (MICA and MICB) (PMID: 11429322). MICA and MICB are stress-inducible surface molecules that are not associated with  $\beta$ 2-microglobulin and do not present peptides (PMID: 9497295). They are expressed in intestinal epithelium and many epithelial tumors (PMID: 10359807). MICA and MICB are ligands for NKG2D which is an activating receptor that is expressed on most natural killer (NK) cells, CD8  $\alpha$  T cells, and  $\gamma$   $\delta$  T cells (PMID: 10426993; 11491531). The monoclonal antibody 6D4 recognizes MICA and MICB.

## Bemerkenswerte Veröffentlichungen

Verfasser	Pubmed ID	Journal	Anwendung
Fei Liu	36497344	Cancers (Basel)	WB
Yang Wang	32349046	J Immunother	WB
Hui-Yang Wu	34999394	Int Immunopharmacol	WB

## Lagerung

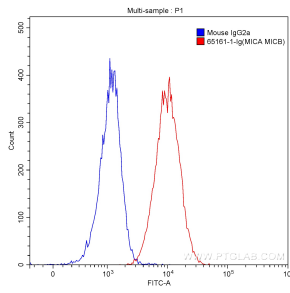
**Lagerungsbedingungen:**  
Store at 2-8°C. Stable for one year after shipment.

**Lagerungspuffer:**  
PBS mit 0,1% Natriumazid.

For technical support and original validation data for this product please contact:  
T: 1 (888) 4PTGLAB (1-888-478-4522) (toll free in USA), or 1(312) 455-8498 (outside USA)  
E: proteintech@ptglab.com  
W: ptglab.com

**This product is exclusively available under Proteintech Group brand and is not available to purchase from any other manufacturer.**

## Ausgewählte Validierungsdaten



$1 \times 10^6$  HeLa cells were surface stained with 0.20 ug/test Purified Anti-Human MICA/MICB (65161-1-Ig, Clone:6D4) (red) or 0.20 ug Mouse IgG2a Isotype Control (66360-2-Ig, CloneK11A1B2A2) (blue) and CoraLite®488-Conjugated AffiniPure Goat Anti-Mouse IgG(H+L) with dilution 1:1000. Cells were not fixed.