

Nur für Forschungszwecke

CD86 Monoklonaler Antikörper

Katalog-Nr.:65165-1-Ig



Allgemeine Informationen

Katalog-Nr.: 65165-1-Ig	GenBank-Zugangsnummer: BC040261	Reinigungsmethode: Protein-A-Reinigung
Größe: 100ug, 0.5 mg/ml	GeneID (NCBI): 942	CloneNo.: BU63
Wirt: Maus	Vollständiger Name: CD86 molecule	Empfohlene Verdünnungen: IF 1:500-1:2000
Isotyp: IgG1, kappa	Berechnete Masse: 329 aa, 38 kDa	

Anwendungen

Geprüfte Anwendungen: FC, IF	Positivkontrollen: IF : Raji-Zellen,
Getestete Reaktivität: Human	

Hintergrundinformationen

CD86 (also known as B7.2) is a costimulatory molecule belonging to the immunoglobulin superfamily. Primarily expressed on antigen-presenting cells (APCs), including B cells, dendritic cells, and macrophages, CD86 is the ligand for two proteins at the cell surface of T cells, CD28 antigen and cytotoxic T-lymphocyte-associated protein 4. Binding of CD86 with CD28 antigen is a costimulatory signal for activation of the T-cell. Binding of CD86 with cytotoxic T-lymphocyte-associated protein 4 negatively regulates T-cell activation and diminishes the immune response.

Lagerung

Lagerungsbedingungen:
Store at 2-8°C. Stable for one year after shipment.
Lagerungspuffer:
PBS mit 0,1% Natriumazid.

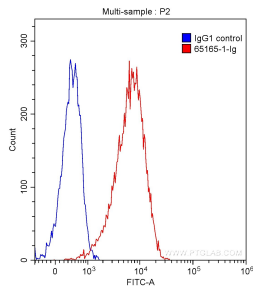
For technical support and original validation data for this product please contact:

T: 1 (888) 4PTGLAB (1-888-478-4522) (toll free in USA), or 1(312) 455-8498 (outside USA)

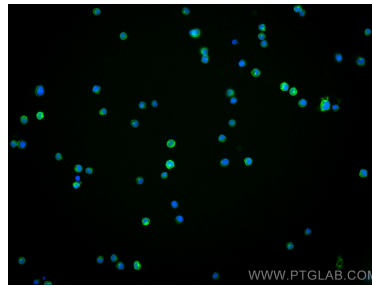
E: proteintech@ptglab.com
W: ptglab.com

This product is exclusively available under Proteintech Group brand and is not available to purchase from any other manufacturer.

Ausgewählte Validierungsdaten



1X10⁶ Daudi cells were surface stained with 0.20 ug Anti-Human CD86 (65165-1-Ig, Clone: BU63) (red) or 0.20 ug isotype control antibody (blue) and CoraLite®488-Conjugated AffiniPure Goat Anti-Mouse IgG(H+L) with dilution of 1:1000. Cells were not fixed.



Immunofluorescent analysis of (4% PFA) fixed Raji cells using CD86 antibody (65165-1-Ig, Clone: BU63) at dilution of 1:1000 and CoraLite®488-Conjugated AffiniPure Goat Anti-Mouse IgG(H+L).