

Nur für Forschungszwecke

CD62L Monoklonaler Antikörper

Katalog-Nr.:65167-1-Ig



Allgemeine Informationen

Katalog-Nr.:
65167-1-Ig

Größe:
100ug, 1 mg/ml

Wirt:
Maus

Isotyp:
Mouse IgG1

GenBank-Zugangsnummer:
BC020758

GeneID (NCBI):
6402

Vollständiger Name:
selectin L

Berechnete Masse:
42 kDa

Reinigungsmethode:

Mit Protein-A-
Affinitätschromatographie gereinigt

CloneNo.:
DREG56

Anwendungen

Geprüfte Anwendungen:
FC

Getestete Reaktivität:
Human

Hintergrundinformationen

CD62L, also known as L-selectin or SELL, is a member of the selectin family of adhesion molecules that also include CD62E (E-selectin) and CD62P (P-selectin) (PMID: 2663882, 2473156, 1382078). CD62L is a highly glycosylated protein of 95-105 kDa on neutrophils and 74 kDa on lymphocytes (PMID: 1382078; 1694883, 1695155). CD62L is expressed on the surface of most leukocytes, including lymphocytes, neutrophils, monocytes, eosinophils, hematopoietic progenitor cells, and immature thymocytes (PMID: 1694883, 1688580). It mediates the binding of lymphocytes to high endothelial venules (HEV) of peripheral lymph nodes through interactions with a constitutively expressed ligand, and is also involved in lymphocyte, neutrophil, and monocyte attachment to endothelium at sites of inflammation (PMID: 1382078).

Lagerung

Lagerungsbedingungen:
Bei 2-8°C lagern.

Lagerungspuffer:
PBS mit 0,1% Natriumazid.

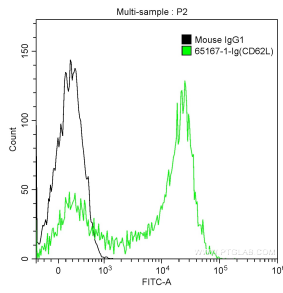
For technical support and original validation data for this product please contact:

T: 1 (888) 4PTGLAB (1-888-478-4522) (toll free
in USA), or 1(312) 455-8498 (outside USA)

E: proteintech@ptglab.com
W: ptglab.com

This product is exclusively available under Proteintech Group brand and is not available to purchase from any other manufacturer.

Ausgewählte Validierungsdaten



1X10⁶ human peripheral blood lymphocytes were surface stained with 0.5 ug Anti-Human CD62L (65167-1-Ig, Clone: DREG56) (green) or 0.5 ug isotype control antibody (black), and CoraLite®488-Conjugated AffiniPure Goat Anti-Mouse IgG(H+L). Cells were not fixed.