

Nur für Forschungszwecke

CD163 Monoklonaler Antikörper

Katalog-Nr.:65169-1-Ig



Allgemeine Informationen

Katalog-Nr.: 65169-1-Ig	GenBank-Zugangsnummer: BC051281	Reinigungsmethode: Protein-A-Reinigung
Größe: 100ug, 0.5 mg/ml	GeneID (NCBI): 9332	CloneNo.: GHI/61
Wirt: Maus	Vollständiger Name: CD163 molecule	
Isotyp: IgG1, kappa	Berechnete Masse: 1156 aa, 125 kDa	

Anwendungen

Geprüfte Anwendungen:
FC

Getestete Reaktivität:
Human

Hintergrundinformationen

CD163, also known as M130, is a membrane glycoprotein which belongs to the scavenger receptor superfamily (PMID: 8370408). It is an acute phase-regulated and signal-inducing macrophage protein expressed exclusively in monocytes and tissue macrophages (PMID: 11196644). CD163 mediates endocytosis of haptoglobin-haemoglobin complexes (PMID: 11196644). The uptake of haptoglobin by macrophages contributes to the recycling of iron and also to the inflammatory response (PMID: 22900885). Soluble CD163 (sCD163), as a result of ectodomain shedding during inflammatory activation of macrophages, circulates in blood and has been suggested as a plasma/serum marker for macrophage activity (PMID: 12570164).

Lagerung

Lagerungsbedingungen:
Store at 2-8°C. Stable for one year after shipment.

Lagerungspuffer:
PBS with 0.09% sodium azide.

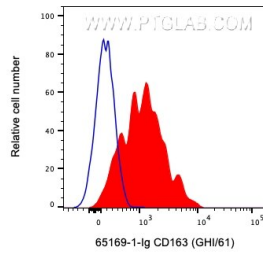
For technical support and original validation data for this product please contact:

T: 1 (888) 4PTGLAB (1-888-478-4522) (toll free in USA), or 1(312) 455-8498 (outside USA)

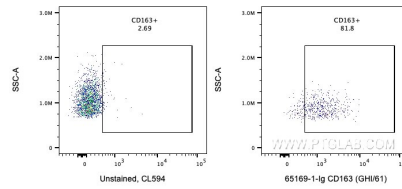
E: proteintech@ptglab.com
W: ptglab.com

This product is exclusively available under Proteintech Group brand and is not available to purchase from any other manufacturer.

Ausgewählte Validierungsdaten



1X10⁶ human PBMCs were surface stained with 0.5 ug Anti-Human CD163 (65169-1-Ig, Clone:GHI/61) and CoraLite®594-Conjugated AffiniPure Goat Anti-Mouse IgG(H+L) at dilution 1:1000 (red) or unstained. Cells were not fixed. Granulocytes were gated.



1X10⁶ human PBMCs were surface stained with 0.5 ug Anti-Human CD163 (65169-1-Ig, Clone:GHI/61) and CoraLite®594-Conjugated AffiniPure Goat Anti-Mouse IgG(H+L) at dilution 1:1000 or unstained. Cells were not fixed. Granulocytes were gated.