

Nur für Forschungszwecke

CD235a Monoklonaler Antikörper

Katalog-Nr.:65174-1-Ig



Allgemeine Informationen

Katalog-Nr.:

65174-1-Ig

Größe:

100ug, 1 mg/ml

Wirt:

Maus

Isotyp:

Mouse IgG2b

GenBank-Zugangsnummer:

BC005319

GeneID (NCBI):

2993

Vollständiger Name:

glycophorin A (MNS blood group)

Berechnete Masse:

150 aa, 16 kDa

Reinigungsmethode:

Mit Protein-A-

Affinitätschromatographie gereinigt

CloneNo.:

HIR2

Anwendungen

Geprüfte Anwendungen:

FC

Getestete Reaktivität:

Human

Hintergrundinformationen

Glycophorin A (GYPA) is the major transmembrane sialoglycoprotein in erythrocytes. It is a dimeric type I transmembrane protein carrying 15 closely clustered O-linked tetrasaccharides capped with sialic acid/N-acetylneuraminic acid (Neu5Ac). This 36 kDa protein represents the major sialoglycoprotein of the red blood cell membrane displaying about one million copies per cell. (PMID: 9490702)

Lagerung

Lagerungsbedingungen:

Bei 2-8°C lagern.

Lagerungspuffer:

PBS mit 0,1% Natriumazid.

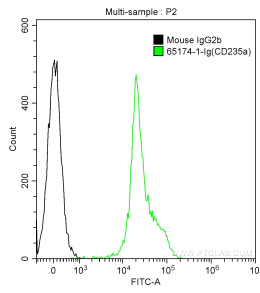
For technical support and original validation data for this product please contact:

T: 1 (888) 4PTGLAB (1-888-478-4522) (toll free
in USA), or 1(312) 455-8498 (outside USA)

E: proteintech@ptglab.com
W: ptglab.com

This product is exclusively available under Proteintech Group brand and is not available to purchase from any other manufacturer.

Ausgewählte Validierungsdaten



Human red blood cells were surface stained with Anti-Human CD235a (65174-1-Ig, Clone:HIR2) and CoraLite®488-Conjugated AffiniPure Goat Anti-Mouse IgG(H+L) (green), or stained with Mouse IgG2b Isotype Control Antibody and CoraLite®488-Conjugated AffiniPure Goat Anti-Mouse IgG(H+L) (black). Cells were not fixed.